

AMAAAL

Amaal, a dynamic real estate developer, is at the forefront of transforming Dubai's urban landscape with elevated and community-centric projects.

Established under the visionary leadership of Abdulla Lahej, Amaal leverages over two decades of industry expertise to deliver residential masterpieces that blend sophisticated design with functional living. Rooted in the Arabic word for 'aspiration,' Amaal reflects a commitment to turning the aspirations of landowners and investors into reality, seamlessly integrating properties with Dubai's vibrant urban and natural landscapes.

THE REAL ESTATE ECOSYSTEM

Delivering comprehensive, end-to-end solutions tailored for landowners and investors worldwide.





VX Studio is an internationally renowned architectural design firm. Since 2011, they have delivered iconic projects of varying size and complexity, specializing in master planning, hospitality, multi and single family residential, retail and mixed use, repositioning, cultural and healthcare. As an award-winning practice, their portfolio of work spans local and international markets, exhibiting their extensive experience across multiple industry sectors.

VX Studio currently manages a portfolio of over US\$5 billion. With proven ability in producing highly acclaimed projects, they continue partnering with prominent real estate developers to deliver the most successful and profitable developments. With dedication to high quality design, regardless of budget, VX Studio is placed at the forefront of the building and property industry.

Renowned architectural design firm with projects and developments globally.



RESIDENTIAL
AL HAMRA WATERFRONT, RAK



RESIDENTIAL
MARRIOT RESIDENCES, BUSINESS BAY, DUBAI



HOSPITALITY
STC MARIOTT HOTEL, RIYADH



RESIDENTIAL & MIXED USE
ETILER GARDENS, ISTANBUL, TURKEY



RESIDENTIAL & MIXED USE
CAVALLI RESIDENCES, BUSINESS BAY, DUBAI



HOSPITALITY
ANDAZ HOTEL, JUMEIRAH, DUBAI



SERVICED APARTMENTS
CORAL BAY RESORT, AL MARJAN ISLAND, RAK



DESIGN COMPETITION
SELECT BAY MASTERPLAN, BUSINESS BAY, DUBAI



HOTEL, SERVICED APARTMENT, BRANDED RESIDENTIAL,
COMMERCIAL, F&B
SWAROVSKI TOWERS, DOWN TOWN, DUBAI



RETAIL & MIXED USE
VUE GREEN CITY, NEW CAPITAL, EGYPT



CULTURAL
THINK TANK, KING ABDULLAH ECONOMIC CITY, KSA



RESIDENTIAL
WEST 5 TOWER, BUSINESS BAY, DUBAI



MASTERPLANNING
MAG CREEK WELLBEING RESORT, DUBAI



RESIDENTIAL
AHAD RESIDENCES, BUSINESS BAY, DUBAI



RETAIL & MIXED USE
AGORA MALL, DUBAI



RETAIL & MIXED USE/HOSPITALITY/COMMERCIAL
AL MASHTAL, ABU DHABI



RETAIL & LEISURE
SHAMS AL AROUS, JEDDAH



RETAIL
AL BATEEN BEACH, ABU DHABI



RETAIL & MIXED USE
SHAMS AL RIYADH, KSA



RESIDENTIAL
MID RISE RESIDENTIAL DUBAI HILLS, DUBAI



RESIDENTIAL & MID-RISE
ACACIA ESTATES, RIYADH, KSA



LEISURE & CULTURAL
MARTYRS MEMORIAL, ZABEEL PARK, DUBAI

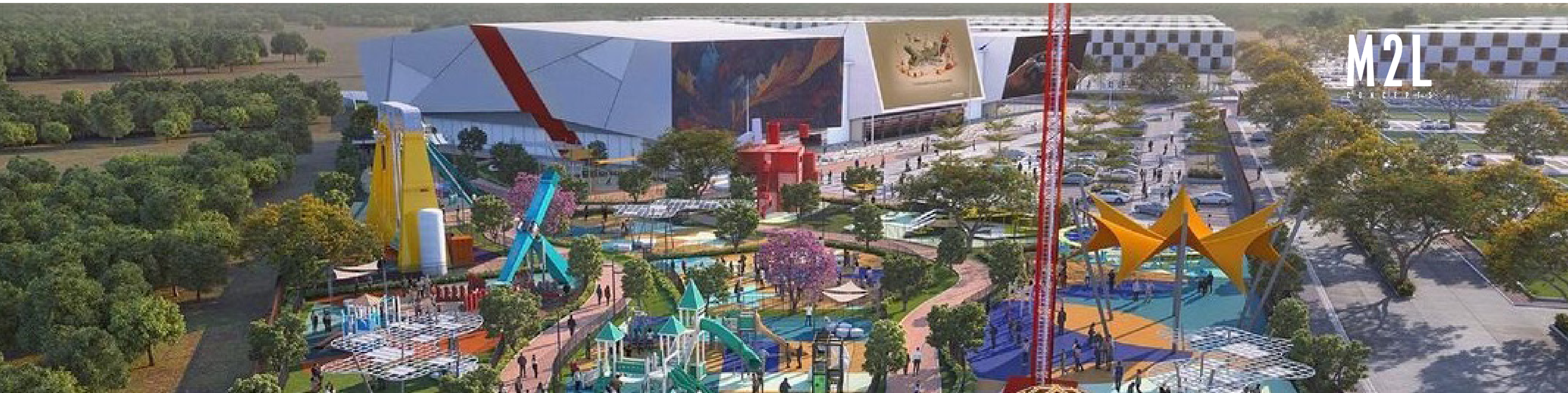


RESIDENTIAL
PRIVATE VILLA, JUMEIRAH, DUBAI



RETAIL & LEISURE
AL RESALA MALL, BANIYAS, ABU DHABI





Our mission is to propel enterprises and consumers to unparalleled Immersive Experiences, greater levels of engagement and higher performance by activating spaces with unique concepts.

We leverage outdoor and indoor Entertainment, traditional Leisure activities as well as Mixed Realities (XR) Experiences creating compelling content for entertainment, relaxation, and education.

We work with a variety of clients such as Mall Developers, Real Estate Developers, Hospitality ,Government Entities and craft bespoke solutions to boost performance, profitability and loyalty.

Our consultancy and delivery scope includes ideation, concept master-planning, content development, feasibility all the way through to implementation, launch as well as ongoing support, aftercare and potential join ventures.

M2L redefine experiences through new realities.



CONCEPT DESIGN
NEOM - ADVENTURE SPORTS VILLAGE



CONCEPT & SCHEMATIC DESIGN
RAMA HIGH STREET - ENTERTAINMENT & LEISURE PARK



DETAIL & BUILD OPERATIONS
IMKAN - INDOOR KIDS ENTERTAINMENT



DESIGN, EXECUTION AND OPERATIONS
FOR TEMPORARY DESTINATION
RAMADAN DISTRICT AND WINTER DISTRICT



CONCEPT DESIGN AND 3D ANIMATION
APEX INV - MAWASEM PWR HOUSE



CONCEPT DESIGN & LAUNCH
IMKAN - OUTDOOR UNIQUE WATER ATTRACTIONS



CONCEPT & DEVELOPMENT, PROJECT DELIVERY,
OPERATIONS PLAN, POST OPENING SUPPORT
VR PARK - INDOOR VR ENTERTAINMENT



RETAIL CURATION & MARKET MANAGEMENT
RAMADAN SHOPPING EXPERIENCE AT EXPO



CONCEPT & SCHEMATIC DESIGN TO TENDER
MAG GROUP HOLDING - OUTDOOR PARK
ENTERTAINMENT



CONCEPT MASTERPLANNING & DETAILED DESIGN
OUTDOOR FUJAIRAH ADVENTURE PARK



CONCEPT DESIGN & SCHEMATIC DESIGN
HATTA SCHOOL REPURPOSING



EVENT MANAGEMENT
EMIRATES - GLOBAL CONFERENCE













opaal
space reimagined

Opaal Interiors is the Middle East’s leading interior design company with services that include interior styling, furnishing, brand design and concept design. Since inception, they have fashioned hospitality sectors, model homes, commercial and sales centres, and a string of luxury interiors for homeowners and up-and-coming retailers.

Using ingenuity, enthusiasm and experience, Opaal’s speciality is finding the intricate balance between the ambitions of the user, the needs of the industry and the shape of its physical space. Pioneers in the field of interior design they have a keen eye for spatial awareness, an intimate understanding of aesthetic aspects, and an aptitude for making the most of available space that is practical, as well as beautiful.

Internationally recognized, leading interior design company.



RESIDENTIAL
AHAD RESIDENCES, BUSINESS BAY, DUBAI



RETAIL & MIXED USE
AL RESALA CENTER, BANIYAS, ABU DHABI



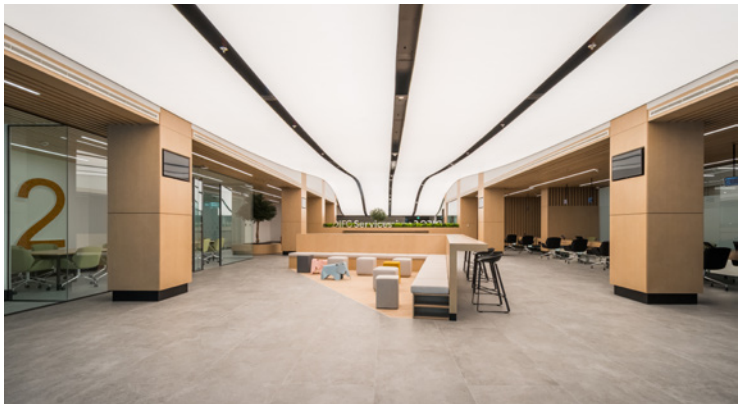
HOSPITALITY
MANDARIN ORIENTAL, DUBAI



RESIDENTIAL
WEST 5, BUSINESS BAY, DUBAI



VILLAS
AL MANARA VILLA, DUBAI



OFFICES
DIFC-CONFERENCE CENTER + GSO, DUBAI



SALES CENTRE
MARSEYA SALES CENTER, KSA



HOSPITALITY
PARAMOUNT, DUBAI



RETAIL & MIXED USE
BURJUMAN MALL, DUBAI



RESIDENTIAL
THE PENINSULA TOWERS, DUBAI



HOSPITALITY
ROVE HOTEL, ABU DHABI



OFFICES
DAMAC HEAD QUARTERS, DUBAI



With over two decades of experience in the real estate industry, our leaders bring a wealth of knowledge and expertise across all facets of the real estate field. Their extensive background encompasses residential, commercial, and industrial real estate, including property development, investment, management, and brokerage services. This seasoned leadership ensures that our partners and clients benefit from unparalleled insights, strategic guidance, and a deep understanding of market dynamics, ultimately driving successful outcomes and fostering long-term relationships.

ABDULLA LAHEJ
CHAIRMAN, AMAAL
CHAIRMAN & FOUNDING
PARTNER, AYANA HOLDING



Abdulla Lahej is the Chairman of Amaal and drives its strategic direction and vision. With over two decades of experience in the UAE real estate sector, leading the launch of innovative high-end residential projects that showcase cutting-edge design and architectural excellence.

His 21-year career in real estate in the region has contributed meaningfully to Dubai’s evolution and position as a globally recognized desirable real estate hub. Formerly Group CEO of Emaar Properties and Group CEO of Dubai Properties, he was directly involved in the creation of such communities as Downtown Dubai (including The Burj Khalifa and Dubai Mall), Dubai Marina, Business Bay and Arabian Ranches.

Abdulla Lahej is also the co-founder and Chairman of Ayana Holding, a diversified, multi-award winning holding company with capabilities ranging from master planning and architecture to interior design and modular building systems. He is very active in driving the growth of Amaal’s development pipeline and ensuring the strategic and timely execution of its current projects.

HAMID KERAYECHIAN
CEO & FOUNDING PARTNER
AYANA HOLDING



Hamid Kerayechian is the CEO & Founding Partner of Ayana Holding, and has full responsibility for executing the strategic direction and ongoing operations for the firm with a strong desire to continually rise to new challenges. With over 20 years of robust experience in the luxury development space and a dynamic entrepreneurial spirit, Hamid is inspired by an innate sense of boldness, integrity and resourcefulness - qualities that he injects to all of his companies, projects and developments. Hamid infuses his companies with an essence of drive, growth and enterprise, which has enabled him to assemble a portfolio of the most prestigious global organizations.

As an energetic and interactive leader, he prides himself on managing teams of highly motivated and experienced professionals, who play a fundamental role in the growth, development and delivery of the quality projects and companies that comprise Ayana Holding.



THOMAS GATEFF

Managing Director & Founding Partner
M2L CONCEPTS

Thomas Gateff led a diverse career in the leisure industry, where he began working for the Entertainment division of Majid Al Futtaim as Head of Operations and eventually being appointed as one of the General Managers.

Throughout his 8 years with the organization, he led key projects including overall operations, business growth and projects delivery, as well as establishing new concepts for the company across leisure and entertainment in the UAE, KSA and Egypt.



NOOR AL-MUHAIDEB

CEO & Founding Partner
OPAAL INTERIORS

With twenty years of professional experience, Noor built her impressive portfolio by implementing and delivering countless residential, hospitality and commercial developments for Emaar Properties. As a natural creative, Noor advocates the belief that the influence of articulate and beautiful interiors transform daily life. She sets the benchmark within the organization for a client responsive approach to design, resulting in a service oriented standard of success within the industry.

Noor guides clients throughout each stage of the design process, working on projects across a range of budgets, requirements and timeframes.



BARRY EBRAHIMY

CEO
AYANA PROPERTIES

Barry Ebrahimy is a leading strategist in revenue, marketing, and operations for major property developers in the UAE, with a career spanning internationally. An MBA graduate from the University of Ottawa, he has shaped sales, marketing, and customer service functions at top organizations worldwide.

Since moving to Dubai in 2006, Barry has held senior executive positions, including leading a successful sales team at Damac and serving as Director of Sales and Marketing at Emaar. At Al Hamra, he led multiple departments and managed personal assets of the ruling family of Ras Al Khaimah.



DUBAI 100

REAL ESTATE

HAMID KERAYECHIAN
CEO and Founding Partner
Ayana Holding



With over two decades of experience in luxury real estate development, Kerayechian stands at the helm of Ayana Holding, a conglomerate he has transformed into a globally recognized network. Under his result-driven leadership, Ayana Holding has become a powerhouse, providing a comprehensive range of industry-specific solutions to governments and real estate developers across the globe.

His strategic vision has led to the expansion of Ayana Holding's service offerings, encompassing everything from real estate investment and development to design, construction management, marketing, strategy, technology, IT, infrastructure, asset management, procurement, hospital-ty advisory, and general trading.

Kerayechian has meticulously diversified Ayana Holding's business sectors, incorporating real estate investment and brokerage through Ayana Properties, architectural design, and construction management with VV Studio, interior design by Opal Interiors, and marketing and branding through Broad Capital. His endeavors also include developing the leisure and entertainment sector with MLL Concepts, advancing IT infrastructure and Projects with Xplor, and overseeing building materials procurement, general trading, and asset management with Tetra, among other ventures. His leadership has been instrumental in broadening the company's global presence, notably in the GCC, Europe, North America, CIS countries, and Africa.

DUBAI 100

AYANA

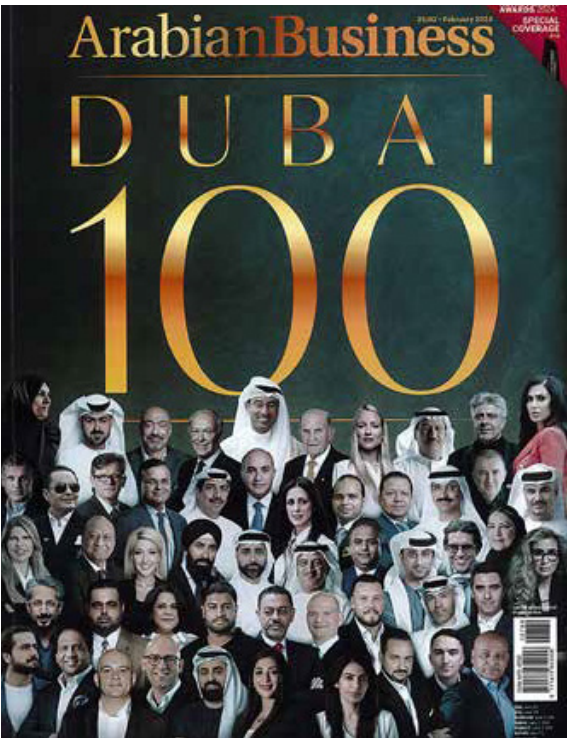
Ayana Holding is dedicated to assembling a network of formidable companies that collaborate to offer a broad range of high-quality services and expertise.

conglomerate, known for its adeptness in thriving within diverse, transitional, and complex economies, positioning it as a leader in innovation. The company excels in creating a global network of influential companies, leveraging its substantial financial, operational, and strategic expertise, and expansive network. This approach enables the company to transcend international boundaries and leverage its expertise in high-growth businesses that disrupt industries and make a significant global impact.

Ayana Holding is dedicated to assembling a network of formidable companies that collaborate to offer a broad range of high-quality services and expertise. Their areas of focus include real estate investment and development, architectural design and master planning, interior design, marketing and strategy, IT security and infrastructure, hospitality management, procurement, asset management, technology, and startups. Boasting a diverse portfolio of companies, Ayana Holding is committed to fostering a culture of excellence, energy, and innovative thinking, resulting in a group of companies renowned for their quality, reliability, and results-driven services. Their ongoing expansion and success have solidified their status as a multi-million-dollar group leading the way in innovation in various economies.

Masterplan projects

Situated in Dubai Healthcare City Phase II, the MLL Creek Wellness Resort emerges as a premier World Class Wellness Resort. This expansive development encompasses a well-appointed hotel, serviced and residential apartments, luxury Creekside villas, and what is set to be the World's largest wellness centre. By introducing such a comprehensive wellness and living complex, the project aims to redefine global standards in Wellness Master planning, positioning Dubai as the leading health tourism hub in the Middle East. Further enhancing the urban landscape, the Dubai Mall Masterplan extension serves as an ambitious vision for growth.



17

Hamid Kerayechian
CEO & Founding Partner,
Ayana Holding

Hamid Kerayechian is the CEO & Founding Partner of Ayana Holding, a prominent international organization headquartered in the United Arab Emirates. Providing end-to-end industry-centric solutions for governments and real estate developers across the globe. With a diverse range of businesses across real estate investment and development, Ayana Holding offers services from Design, construction management, Marketing, Strategy, Technology, IT and Infrastructure, Asset management, Procurement, Hospitality advisory and General trading.

Hamid has full responsibility for executing the strategic direction and ongoing operations for Ayana Holding, an impressive wide-ranging portfolio of companies which include:

- Alt Technology, Aquila Hospitality, Ayana Properties, Broad Capital, Derry Homes, MLL Concepts, Maya Decor, Nisum, Opal Interiors, Performas, ZPEOR, VV Studio and Xplor.

In such a short period of time, the company has reached diverse markets, with ongoing projects not only the Middle East, but the UK, Europe, North America and Asia. With a strong desire to persistently strive for new challenges, Hamid's mission is to continue building a network of powerful companies on a global level and for Ayana Holding to become the most internationally renowned brand across real estate sector, an industry Hamid is a tremendously passionate about.

After graduating from the University of South California with a Master in

Engineering, Hamid relocated to Dubai in 2008 and over the course of his career having operated with some of the world's most influential organizations. With over 17 years of robust experience in the luxury development space and a dynamic entrepreneurial spirit, Hamid is inspired by an innate sense of boldness, integrity and resourcefulness - qualities that he imparts to all of his companies, projects and developments.

Hamid's work and leadership have been recognized with several awards, to name a few, Dubai's Most Influential People and one of the 'Most Inspiring Leaders in the Middle East'; Hamid was also acknowledged as the 'Most Admired Leaders of Asia' and as the 'Young CEO of the Year'.

Hamid has built a solid reputation for incubating new business models and is regularly featured in highly acclaimed publications, sharing his insight and experience regarding architectural design, master planning, developed design, real estate development and investment. His initiatives and market insights are widely admired by peers; his opinions and expertise are highly sought after.

Hamid shares his experiences with an essence of drive, growth and expertise, which has enabled him to assemble a portfolio of the most prestigious global organizations. As an energetic and interactive leader, he prides himself on managing teams of highly motivated and experienced professionals, who play a fundamental role in the growth, development and delivery of the quality projects and companies that comprise Ayana Holding.

Hamid believes that the essence and authenticity of each project is enriched by explorative and open collaborations with all stakeholders. He says, 'collective creativity enhances each endeavor, resulting in strong and distinctive solutions. Our innovative methods drive global brands to partner with us, cultivating and refining ideas for ambitious environments of all kinds.'

Forbes

Billionaires Country Insights Featured Money Industry

Forbes Middle East / Leadership / Leaders' Insights | Paid Program


Leaders' Insights | Paid Program

Hamid Kerayechian, CEO of Ayana Holding: Building On Opportunity

Aug 03, 2020, 9:39 AM

Add to Bookmarks

Play Sound



№88

АВГУСТ 2020 - СЕНТЯБРЬ 2020 / AUGUST 2020 - NOVEMBER 2020

ДЕЛОВЫЕ ОТНОШЕНИЯ



Special Topic

ПАВИЛЬОН РОССИИ

на Global Village

★ Cover Story

AYANA HOLDING

A place where changes are made

WOW

ЭКОНОМИКА

Leveraging the Experience Economy

www.bussinesemirates.ae | BUSINESS EMIRATES MAGAZINE | www.rbcdubai.org

ARABIAN BUSINESS STARS OF 2018



ARABIAN BUSINESS VENTURE MEET'S IMPACT






2024 | DESIGN MIDDLE EAST AWARDS
INTERIOR DESIGN FIRM OF THE YEAR - Opaal Interiors



2024 | PILLARS OF REAL ESTATE AWARDS
DIVERSIFIED REAL ESTATE PORTFOLIO - Ayana Holding




2023 | ENTERPRISE AGILITY AWARDS
Holding Company of the Year - Ayana Holding



2023 | ENTERPRISE AGILITY AWARDS
Design and Architecture Company of the Year - VX Studio




2023 | ENTERPRISE AGILITY AWARDS
Ingenuity in Design for Events and Entertainment - M2L Concepts




2023 | WORLD REALTY RECOGNITION
Key Contributor to the Real Estate Industry - Ayana Holding




2020 | INNOVATION IN CONSTRUCTION & FB AWARD
Supplier of the Year - Nioum General Trading




2019-20 | INTERNATIONAL PROPERTY AWARD
Public Service Interior Dubai, DIFC Services - Opaal Interiors



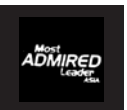
2019 | ARABIAN BUSINESS REAL ESTATE AWARD
Best Interiors Company - Opaal Interiors




2019 | ARABIAN BUSINESS REAL ESTATE AWARD
Best Diversified Holding Company - Ayana Holding




2019 | MEA MARKETS UAE EXCELLENCE AWARD
Leading Interior Design Firm - Opaal Interiors



2018-19 | MOST ADMIRLED LEADER ASIA AWARD
Hamid Kerayechian, Ayana Holding



2018 | MIDDLE EAST BEST BRAND AWARD
Real Estate Sector - VX Studio



2018 | CEO MIDDLE EAST AWARD
Young CEO of the Year Award - Hamid Kerayechian, Ayana Holding



2018 | MIDDLE EAST LIGHTING SUMMIT
Distinguished Speaker Award



2018 | MEA MARKETS UAE BUSINESS AWARD
Best High-End Realty Development Design Management -VX Studio



2018 | DESIGN MIDDLE EAST AWARD
Lifetime Achievement Award - Noor Al Muhaideb, Opaal Interiors



2018 | ARABIAN BUSINESS REAL ESTATE AWARD
Architectural Design Company of the Year - VX Studio



2018 | MEA MARKETS UAE EXCELLENCE AWARD
Leading Interior Design Firm - Opaal Interiors



2018 | MEA MARKETS EXCELLENCE AWARD
Excellence in Architecture - VX Studio

AMAAL

Experience life, masterfully curated.

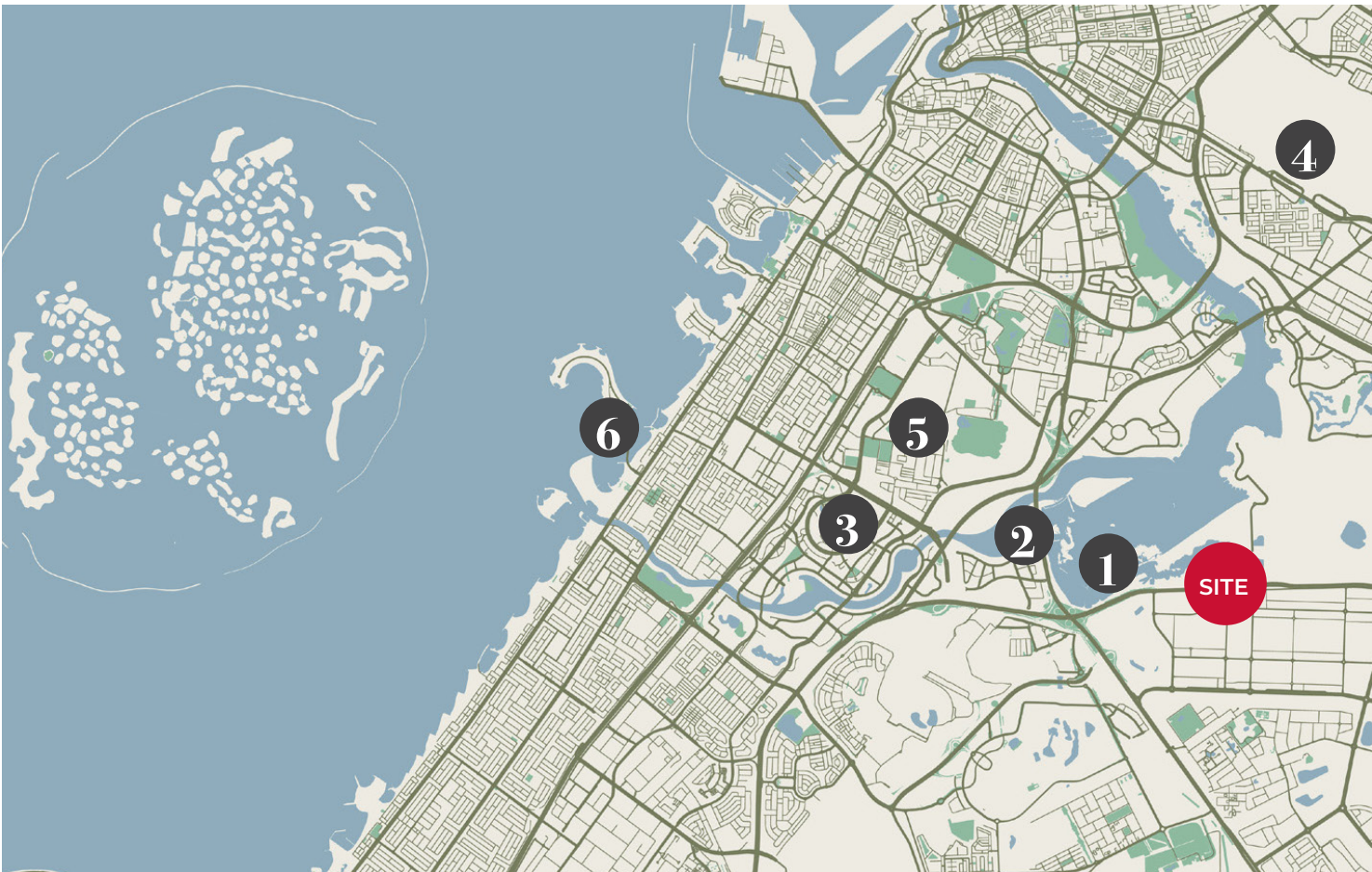
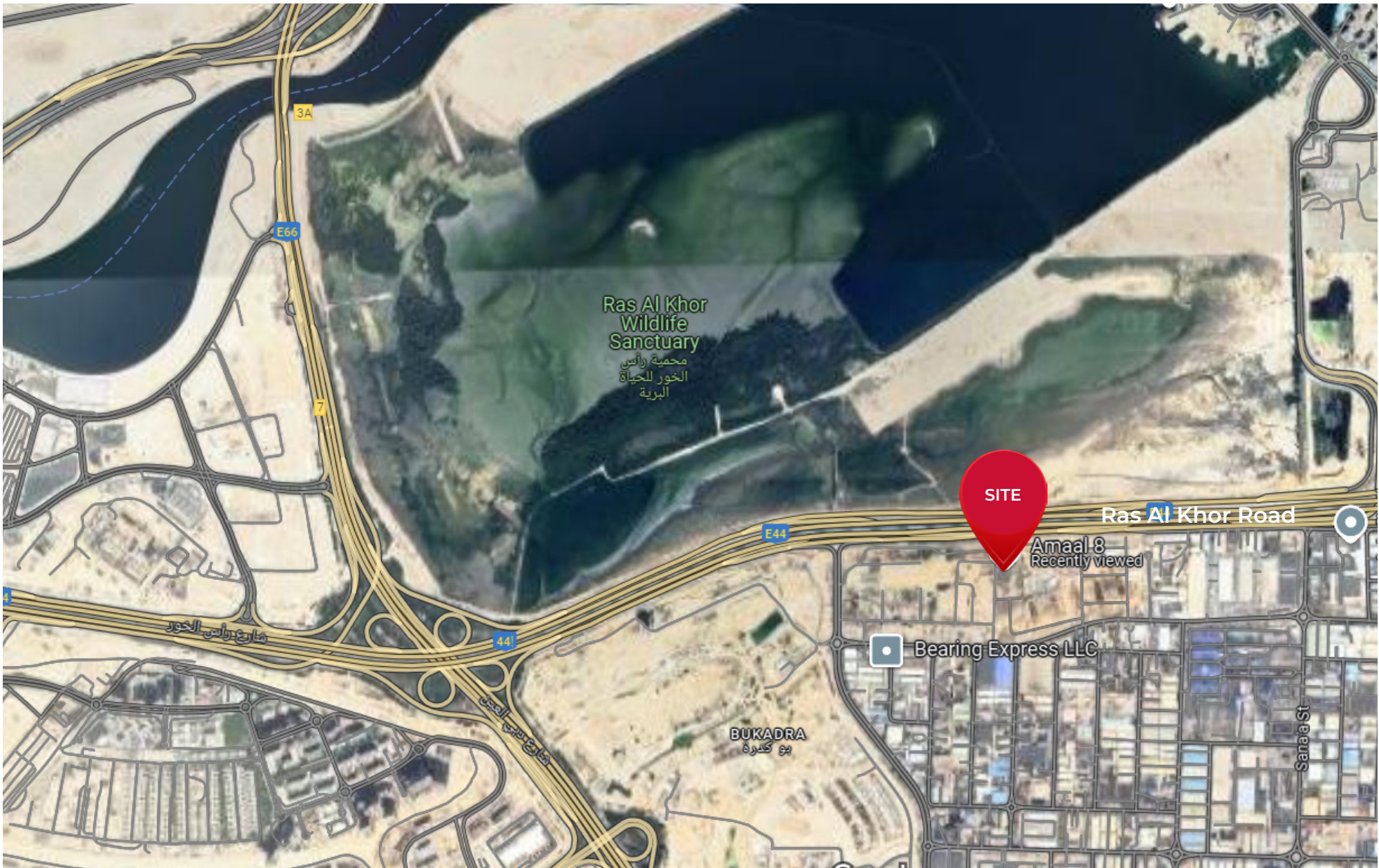


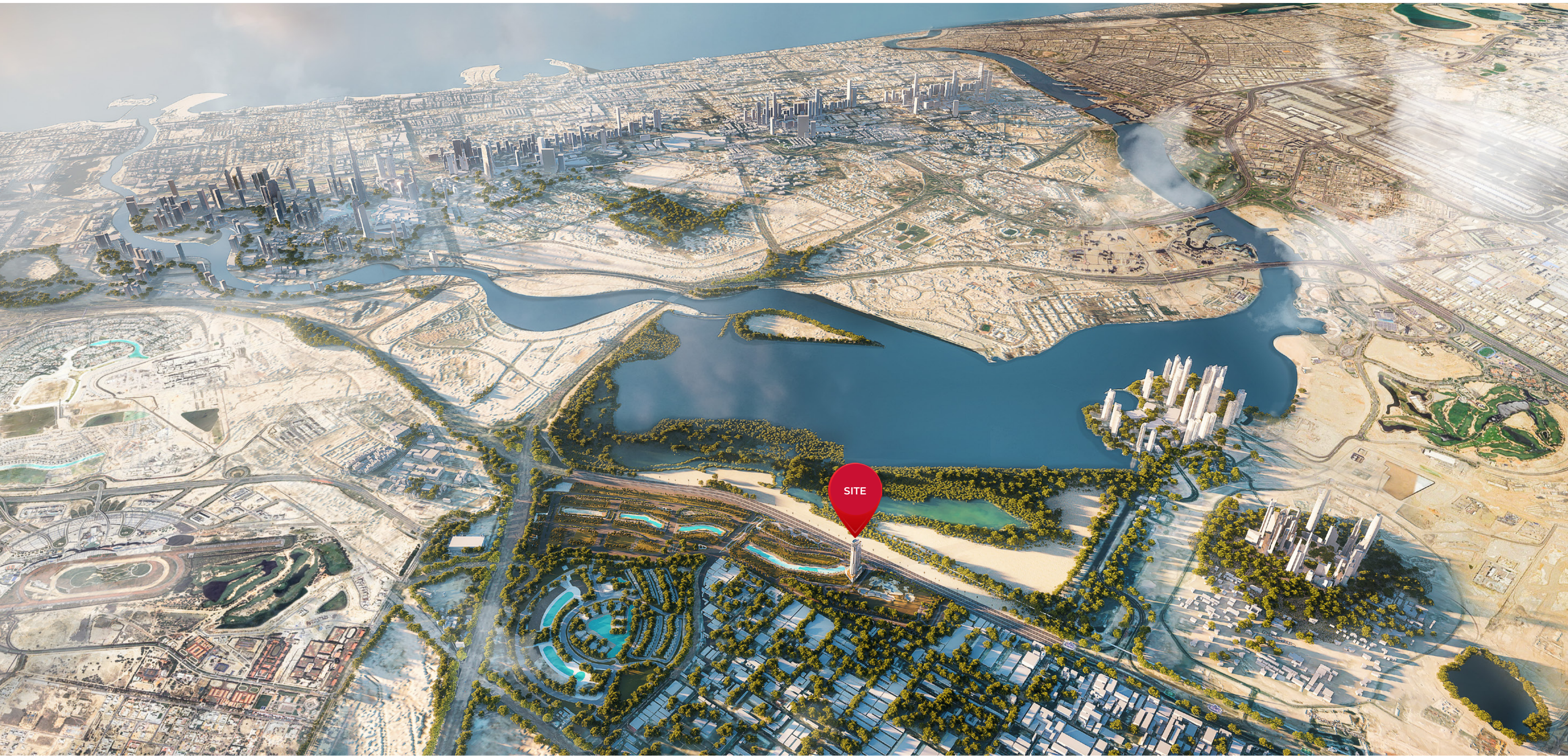
PROJECT OVERVIEW



Located within the Meydan Horizon masterplan community across from the Ras Al Khor Wildlife Sanctuary along Ras Al Khor road.

- 1 Ras Al Khor Wildlife (5 mins)
- 2 Dubai Design District (5 mins)
- 3 Downtown Dubai (10 mins)
- 4 Dubai International Airport (10 mins)
- 5 Dubai International Financial Centre (15 mins)
- 6 Jumeirah Beach (17 mins)







MEYDAN HORIZON

At the center of the community, four crystal-clear lagoons, surrounded by a 4km promenade, form a picturesque oasis.

A series of pristine beaches line the crystal lagoons, offering residents private beach access, stylish lounge and cabana areas, and an array of exciting leisure and recreational watersports.



AMAAL

THE TOWER

AMAAL 8 isn't just a residence—it's a lifestyle destination, providing curated luxury living surrounded by greenery. With abundant green spaces, kid-friendly areas, and vibrant spaces, it strikes the perfect balance between urban convenience and family-friendly amenities.

Amaal 8 rises gracefully with G + P8 + 49 levels, offering 512 exquisite residences, including 1 to 4-bedroom units, the exclusive 8-floor Infinity Collection Residences, and three floors dedicated to world-class amenities. Handover is scheduled for Q4 2027.



GROUND LEVEL
AMENITIES

- 1 Premium Arrival / Drop-Off
- 2 South Tower Lobby Lounge
- 3 North Tower Lobby Lounge
- 4 Retail Promenade
- 5 Prayer Room



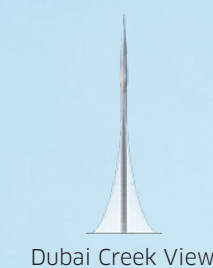
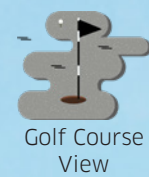
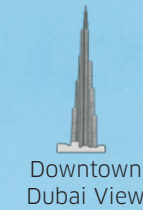
Disclaimer: The contents of this brochure, including pictures, plans, layouts, information, data, and details, are provided as an approximation and are subject to change until the final completion of the project, in accordance with the approved designs, regulatory requirements, and planning permissions. The brochure displays various accessories and interior finishes such as wallpaper, chandeliers, furniture, electronics, white goods, curtains, landscaping, pavements, features, gym, swimming pool(s), and other elements. However, it should be noted that these items are not included with the unit and are solely shown for illustrative purposes.

AMAAL

LEVEL 1

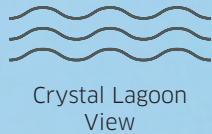
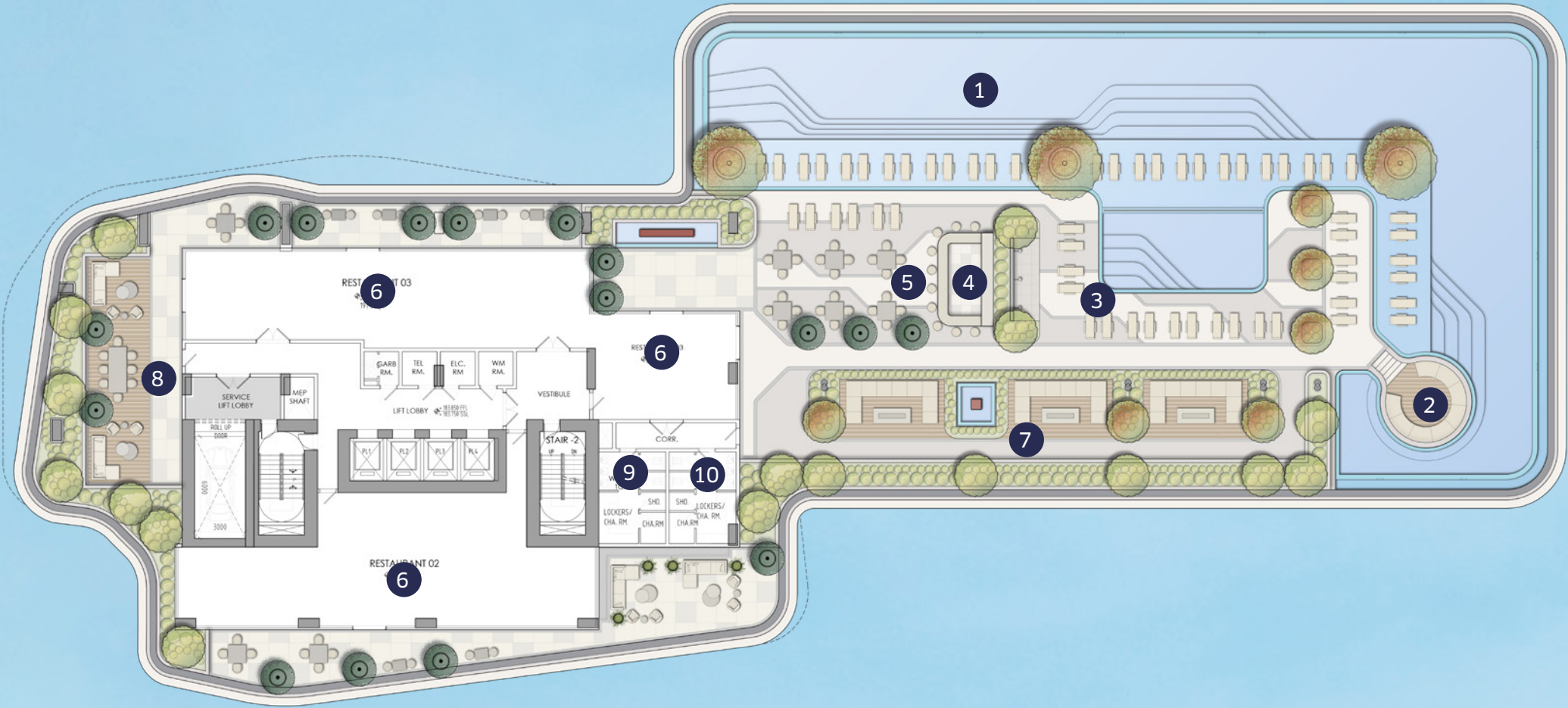
AMENITIES FLOOR

- 1 Padel Court
- 2 Outdoor Gym
- 3 Indoor Gym with Yoga Studio
- 4 Male Spa (Massage, Steam and Sauna)
- 5 Female Spa (Massage, Steam and Sauna)
- 6 Outdoor Spa
- 7 Infinity Pool
- 8 Kids Pool
- 9 Outdoor Play Area
- 10 Kids Play Area
- 11 Mini Golf
- 12 Indoor Cinema
- 13 Racing Simulation Pavilion
- 14 Golf Simulation Pavilion
- 15 Lobby Lounge
- 16 Outdoor Dining
- 17 Restaurant and Bar
- 18 VIP Outdoor Seating
- 19 Residential Lounge
- 20 Outdoor Multi-purpose Area
- 21 Outdoor Shower
- 22 Ladies Changing Room
- 23 Gents Changing Room
- 24 Sun Loungers



LEVEL 41 AMENITIES FLOOR

- 1 Infinity Pool
- 2 Sunken Pool Seating
- 3 Sun Loungers
- 4 Pool Bar
- 5 Outdoor Dining
- 6 Restaurants
- 7 Outdoor Seating
- 8 Outdoor Terrace
- 9 Female Lockers and Washrooms
- 10 Male Lockers and Washrooms



Crystal Lagoon
View



Downtown
Dubai View



Ras Al Khor
Wildlife Sanctuary
view



N



Golf Course
View



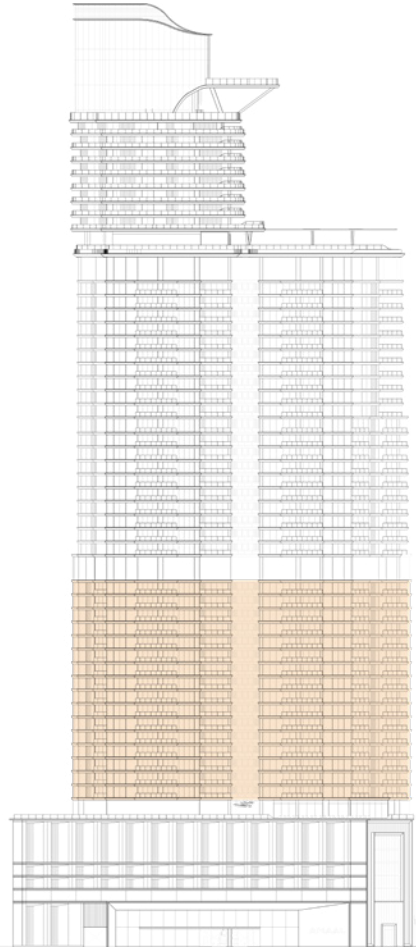
Dubai Creek View



Ras Al Khor Wildlife Sanctuary



Dubai Creek



TIER 1
RESIDENCE

- 1 Bedroom
684 sqft - 956 sqft
- 2 Bedroom
1,216 sqft - 1,758 sqft

- 3 Bedroom
2,072 sqft

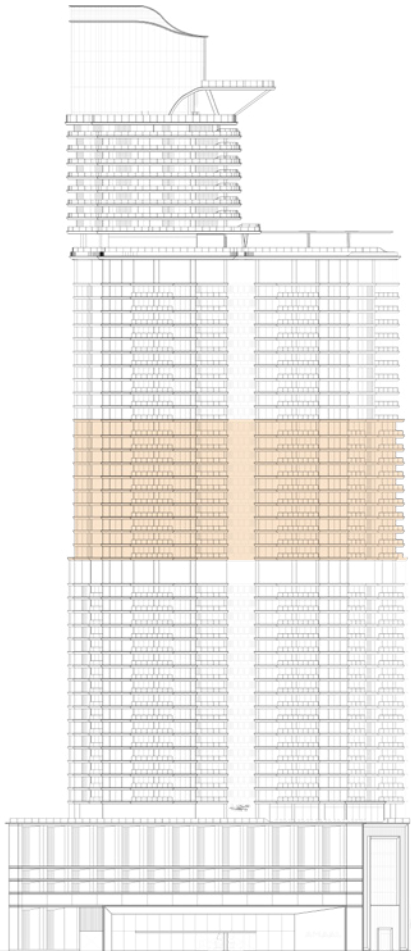
Level 2 to 17



Ras Al Khor Wildlife Sanctuary



Dubai Creek



TIER 2
RESIDENCE

- 1 Bedroom
860 sqft - 956 sqft
- 2 Bedroom
1,216 sqft - 1,617 sqft
- 3 Bedroom
1,977 sqft - 2,984 sqft

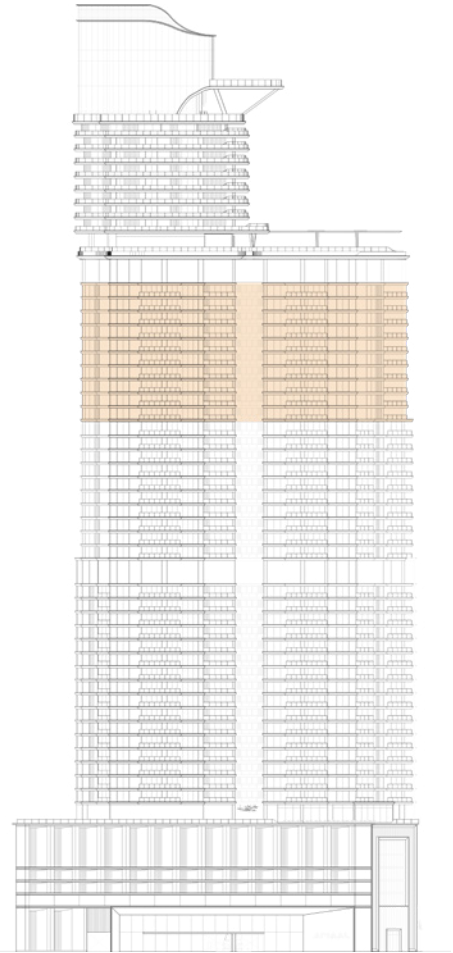
Level 19 to 28



Ras Al Khor Wildlife Sanctuary



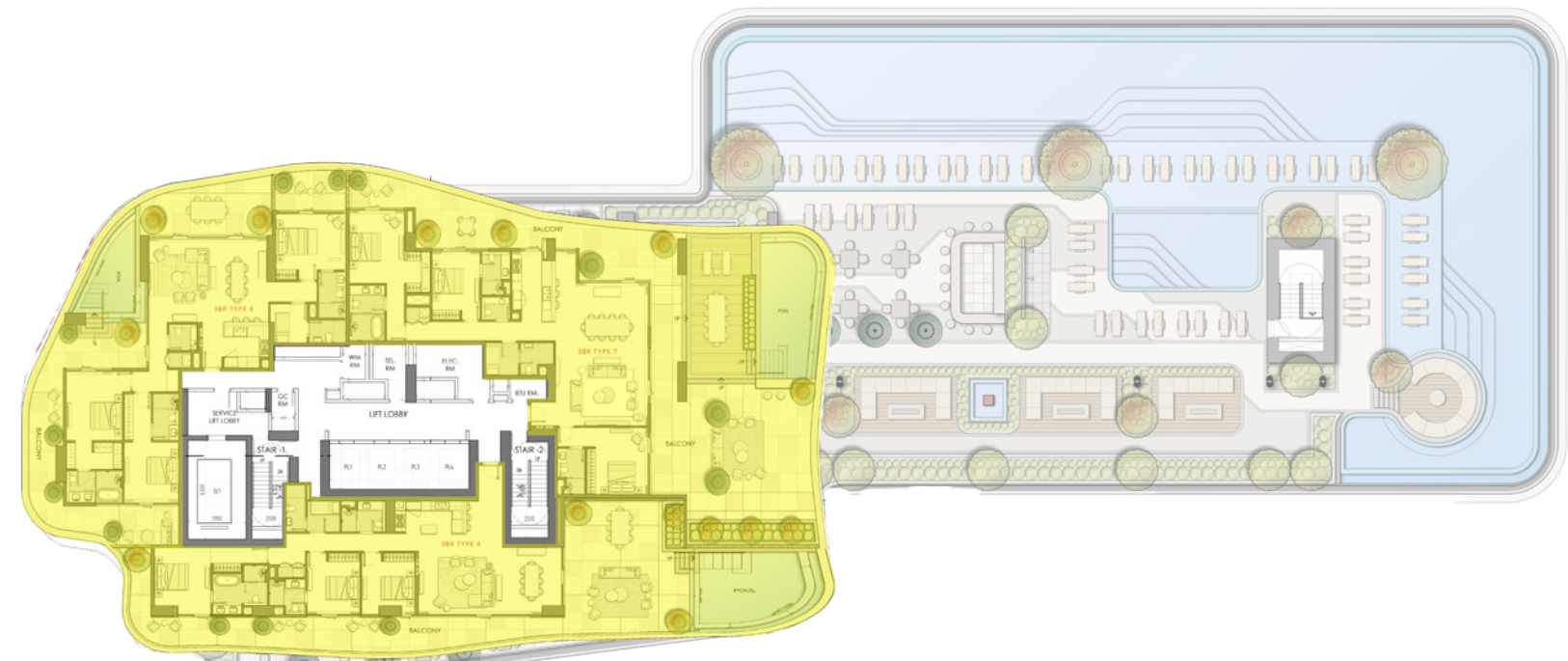
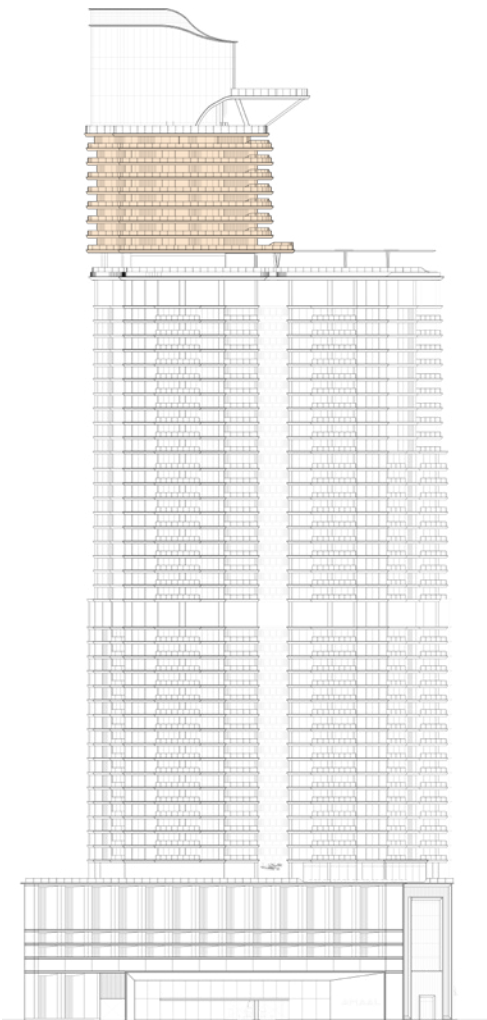
Dubai Creek



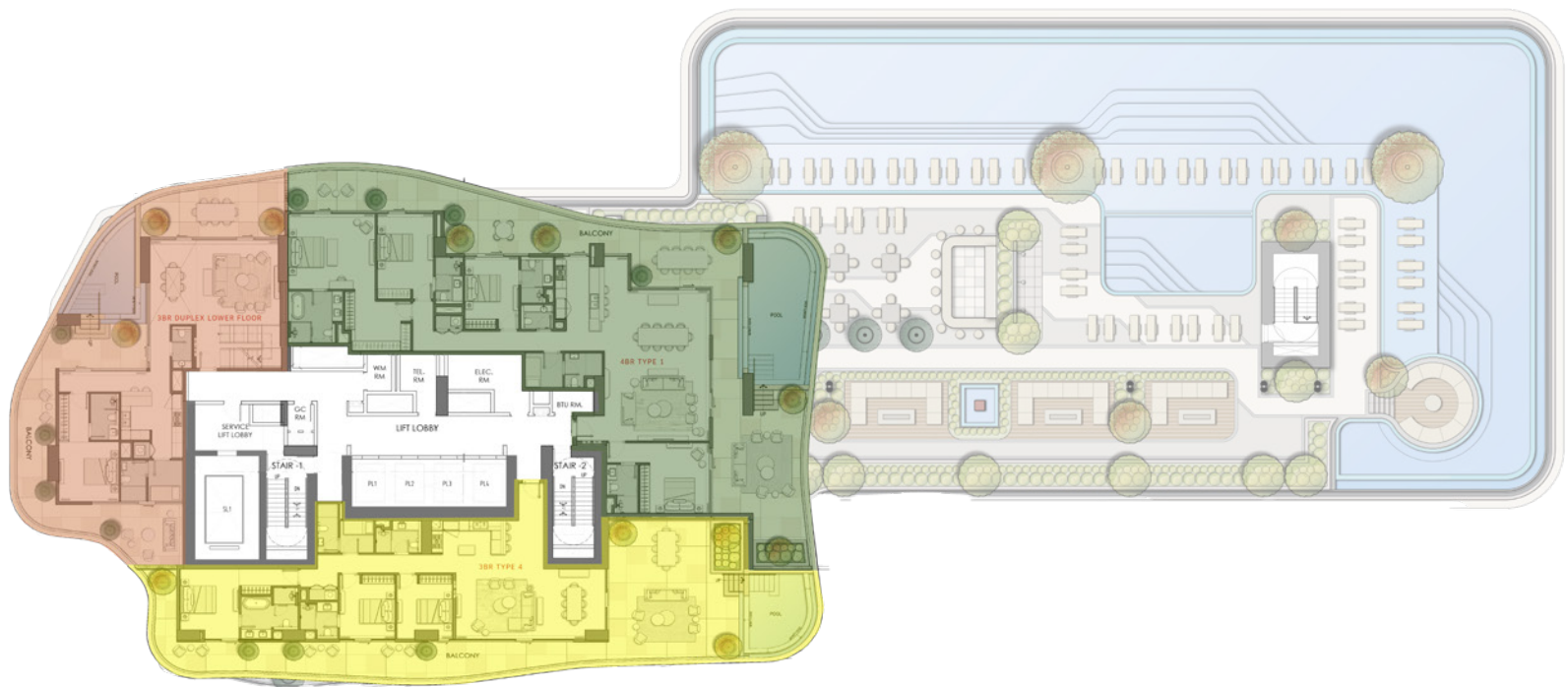
TIER 3
RESIDENCE

Level 29 to 38

- 1 Bedroom
868 sqft - 956 sqft
- 2 Bedroom
1,216 sqft - 1,638 sqft
- 3 Bedroom
2,984 sqft - 3,023 sqft
- 4 Bedroom Duplex
3,074 sqft



Level 42 & 43



Level 44 to 49

Ras Al Khor Wildlife Sanctuary

Dubai Creek

TIER 4
INFINITY
COLLECTION

Level 42 to 49



- 3 Bedroom
3,186 sqft - 5,070 sqft
- 4 Bedroom
4,487 sqft
- 3 Bedroom Duplex
5,082 sqft

280

One Bedroom
Residences

684 TO 956 FT²

140

Two Bedroom
Residences

1,216 TO 1,758 FT²

66

Three Bedroom
Residences

1,977 TO 3,070 FT²

5

Four Bedroom
Duplex

3,074 FT²

12

Infinity Collection
Three Bedroom Residences

3,186 FT² TO 5,070 FT²

3

Infinity Collection
Three Bedroom Duplex

5,082 FT²

6

Infinity Collection
Four Bedroom Residences

4,487 FT²

IMAGES





































RESIDENCES



Living and Dining



Dining and Kitchen



Kitchen



Master Bedroom



Master Bathroom



Balcony

INFINITY COLLECTION













Living and Dining



Dining



Kitchen



Master Bedroom



Master Bathroom



Balcony











THANK YOU