

# THE CHEDI

PRIVATE RESIDENCES

SHEIKH ZAYED ROAD, DUBAI, UAE



DESIGNED  
FOR THOSE WHO  
ASPIRE TO THE  
*EXCEPTIONAL.*

*A PLACE TO BELONG.*





# A *LEGACY* OF LUXURY: THE CHEDI BRAND

For over three decades, The Chedi has been synonymous with timeless elegance, refined hospitality, and seamless integration of heritage and modernity. From the pristine shores of Oman to the cultural vibrance of Japan, The Chedi's global portfolio of award-winning destinations embodies a unique philosophy of understated luxury. Now, this esteemed legacy arrives in Dubai with The Chedi Private Residences—a landmark development offering an unprecedented lifestyle experience.



# A SANCTUARY OF *REFINED ELEGANCE*

Ideally located on Sheikh Zayed Road, this groundbreaking development is the world's first standalone private branded residence under The Chedi name.

Globally celebrated for its enduring sophistication, impeccable hospitality, and culturally immersive ethos, The Chedi now brings its iconic legacy to life in Dubai, transforming contemporary urban living with a fresh perspective on luxury and exclusivity.





# THE PINNACLE OF *ELEVATED LIVING*

Soaring 240 meters over 52 floors, this architectural marvel, with its sleek glass façade, is masterfully designed by the award-winning Studio Bruno Guelaff. Redefining grandeur, The Chedi Private Residences presents an exclusive collection of sky villas and world-class amenities, offering a lifestyle beyond the extraordinary.

Discover an exclusive collection of expansive residences, ranging from two- to five-bedroom villas and duplexes to the extraordinary triplex Pinnacle Mansion—a one-of-a-kind masterpiece crowning the building. Experience unparalleled luxury and design in every detail.



# URBAN VIBRANCE MEETS *TRANQUILLITY*

A beacon of cosmopolitan allure, Dubai embodies ambition, innovation, and luxury, drawing entrepreneurs, businesses, and families to an unmatched experience.

The Chedi Private Residences perfectly balances this captivating energy and sophistication with the serenity of an exclusive retreat.







# CRAFTED FOR THOSE WHO *SEEK A PLACE* TO BELONG

Transforming your every day, the residences transcend the expectation of urban living with world-class amenities seamlessly complementing the refined ambience.

From the elegant arrival experience to the exclusive rooftop residents’ Sky Social, every space is thoughtfully crafted to foster meaningful connections while providing a serene atmosphere for personal reflection. Each area achieves a harmonious balance, seamlessly blending opportunities for social engagement with moments of tranquil solitude.







THE CHEDI  
PRIVATE RESIDENCES



## THE AMENITIES



The Chedi Private Residences offers an exceptional range of premium amenities across three distinct levels: Ground Social, Resort Social, and Sky Social. Each level is meticulously designed to enrich the resident experience, offering curated spaces for relaxation, entertainment, and social engagement. The Ground and Resort levels feature a blend of essential amenities and leisure spaces, while the Sky Social level offers an exclusive atmosphere with an adults-only infinity pool, Omakase Experience, Sky Bar & Lounge, ensuring a luxurious living experience at every turn.

FLOORS 6 & 7  
THE RESORT SOCIAL

GROUND FLOOR  
THE GROUND SOCIAL





# THE GROUND SOCIAL

VALET PARKING

ARRIVAL LOBBY

LOBBY LOUNGE & RESTAURANT

CHEDI NAVIGATOR &  
CONCIERGE DESK







VALET PARKING



ARRIVAL EXPERIENCE



## ARRIVAL LOBBY

The Chedi Navigator and Concierge Desk is your gateway to curated experiences and personalised service. Whether you're seeking adventure, relaxation, or cultural immersion, the round-the-clock Concierge team ensures every detail is flawlessly attended to.



ARRIVAL LOBBY





ELEVATOR LOBBY



CONCIERGE



ARRIVAL LOBBY

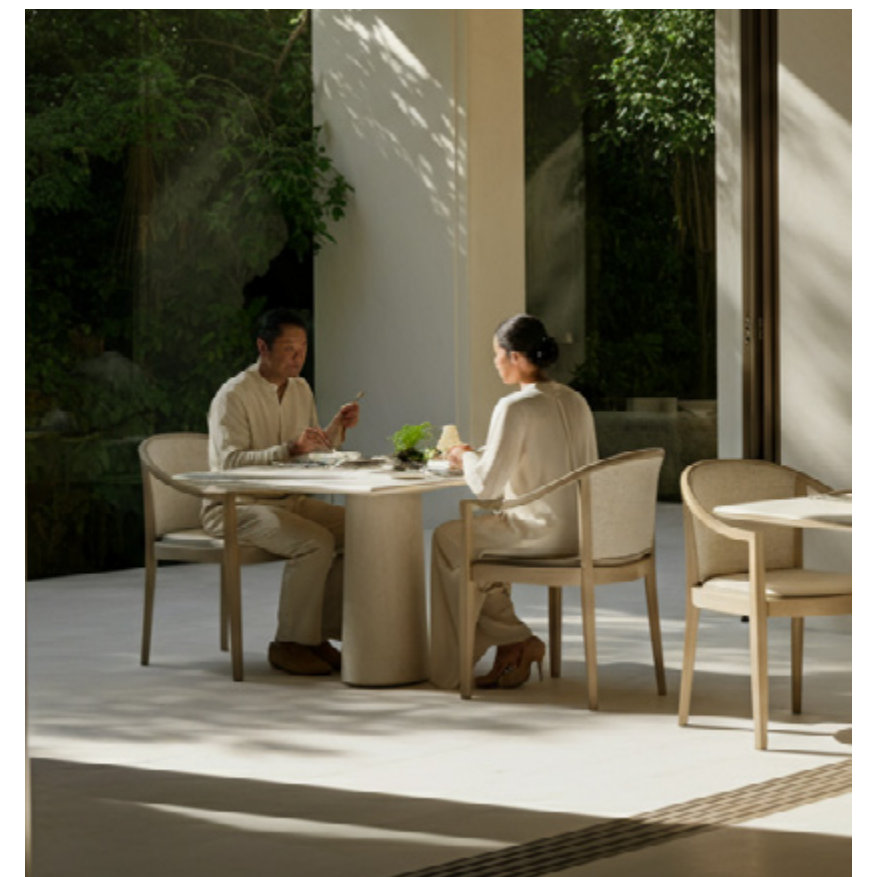


# THE GROUND SOCIAL



## THE GROUND SOCIAL

A boutique dining destination, The Ground Social's signature restaurant is an intimate retreat reserved exclusively for residents. It balances indoor refinement with expansive outdoor terraces. Thoughtfully designed to feel like an extension of home, Ground Social blends the art of seasonal cuisine with a touch of refined indulgence.



# THE GROUND SOCIAL FLOOR PLAN

- 1 VALET PARKING
- 2 ARRIVAL LOBBY
- 3 LOBBY LOUNGE & RESTAURANT
- 4 OUTDOOR SEATING AREAS
- 5 CHEDI NAVIGATOR & CONCIERGE DESK





# THE RESORT SOCIAL

60M LAGOON-INSPIRED POOL

POOL DECK – CABANAS,  
AQUA CABANAS, AND  
PRIVATE DINING CABANAS

YOUNG RESIDENTS' CLUB WITH  
WET & DRY OUTDOOR  
ACTIVITY AREA

OWNERS' CINEMA

HEALTH CLUB WITH GYM

SPA

SAUNAS AND PLUNGE BATHS

PRIVATE PADEL COURTS

250M JOGGING TRACK

BARBECUE AND LOUNGE GARDEN

FITNESS CENTRE

WELLNESS TERRACE





# THE RESORT SOCIAL

The Resort Social welcomes you to a realm of refined tranquility, where soft ambient lighting sets the mood. Boasting a breathtaking 60-meter lagoon-inspired pool, encircled by plush cabanas and loungers, residents are invited to immerse themselves in a vibrant yet serene oasis. From the tranquil atmosphere of the spa to the state-of-the-art health club and exclusive owners' cinema, every moment offers an unforgettable lifestyle experience.



THE RESORT SOCIAL





WELLNESS BAR











## THE POOL

The beautifully crafted 60-meter lagoon-inspired pool offers the perfect balance of an invigorating swim and a serene escape. Surrounded by lush greenery and thoughtfully designed relaxation zones, it invites residents to unwind in style. This tranquil oasis provides an elevated setting to relax, refresh, and embrace the refined elegance of sky-rise living.







THE POOL







## OWNERS' CINEMA

Experience the allure of our private cinema, where cutting-edge audio-visual technology meets luxurious comfort. Immerse yourself in a world of cinematic excellence, with every detail thoughtfully designed to enhance your viewing pleasure. This intimate space offers a perfect blend of elegance and style, creating an unforgettable setting for relaxation and entertainment.



OWNERS' CINEMA







RESIDENTS' SPA

# SPA WELLNESS

Step into a haven of tranquillity at the residents' spa, an exclusive sanctuary dedicated to holistic well-being. Indulge in bespoke treatments tailored to your personal journey, each one a fusion of ancient rituals and modern luxury.





# CLUB WELLNESS

The residents’ dedicated wellness club is a sanctuary where well-being is both body and mind. Discover private spa suites offering infrared saunas, steam showers, plunge baths, and whirlpools designed for profound relaxation and renewal. Invigorate in the state-of-the-art gym, fully equipped with the latest equipment, or seek quiet introspection in dedicated meditation rooms. A wellness concierge and tailored services ensure a seamless immersion into holistic rejuvenation.



RESIDENTS’ GYM



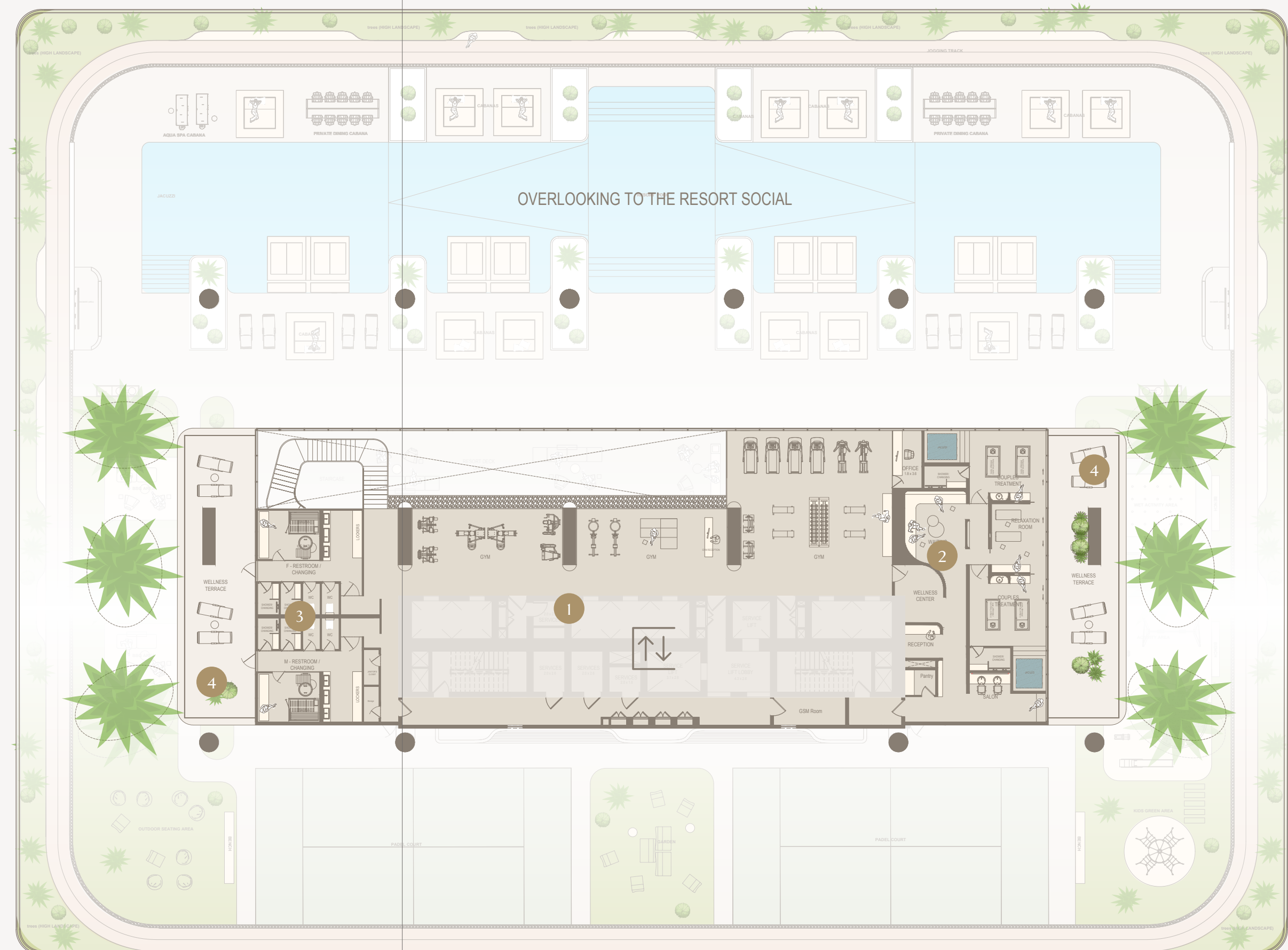
# THE RESORT SOCIAL FLOOR PLAN (LEVEL 1)

- 1 60M LAGOON-INSPIRED POOL
- 2 POOL DECK – CABANAS, AQUA CABANAS, AND PRIVATE DINING CABANAS
- 3 YOUNG RESIDENTS’ CLUB
- 4 YOUNG RESIDENTS’ WET ACTIVITY AREA
- 5 YOUNG RESIDENTS’ DRY ACTIVITY AREA
- 6 OWNERS’ CINEMA
- 7 PRIVATE PADEL COURTS
- 8 250M JOGGING TRACK
- 9 FITNESS STUDIO
- 10 BARBECUE AND LOUNGE GARDEN



# THE RESORT SOCIAL FLOOR PLAN (LEVEL 2)

- 1 HEALTH CLUB WITH GYM
- 2 SPA
- 3 SAUNAS AND PLUNGE BATHS
- 4 WELLNESS TERRACE





# THE SKY SOCIAL

ADULTS-ONLY INFINITY POOL  
& DECK

SKY SOCIAL CAFE

SKY SOCIAL LOUNGE

SUNKEN LOUNGE

SKY SOCIAL BAR

OMAKASE DINING EXPERIENCE

WALK-IN CIGAR HUMIDOR



THE SKY SOCIAL BAR

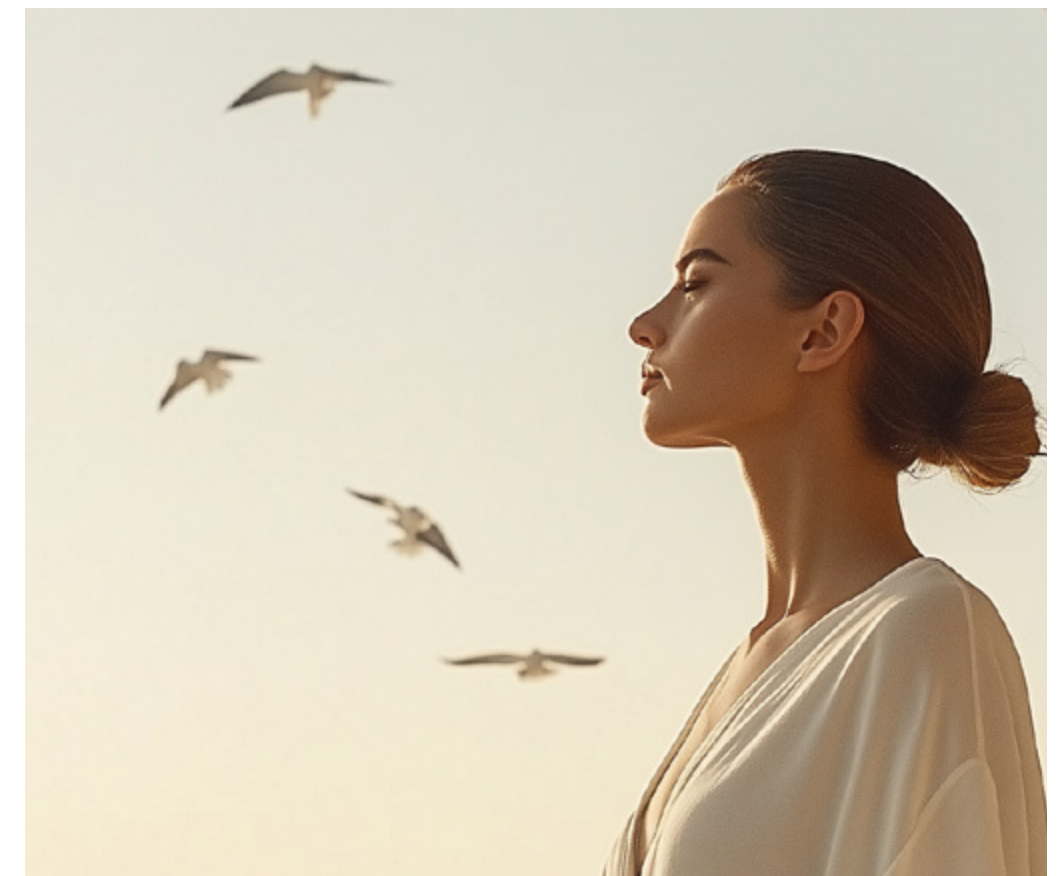




SKY SOCIAL CAFE

## THE SKY SOCIAL

Rise beyond the extraordinary, 240 meters above the city, to an exclusive oasis reserved for residents. Here, amidst Dubai's boundless skyline, the Sky Social offers a harmonious blend of serene retreat and elevated social engagement. Immerse yourself in the adults-only infinity pool or share intimate moments in the sunken lounge with friends, against a backdrop of breathtaking panoramas.







THE SUNKEN LOUNGE

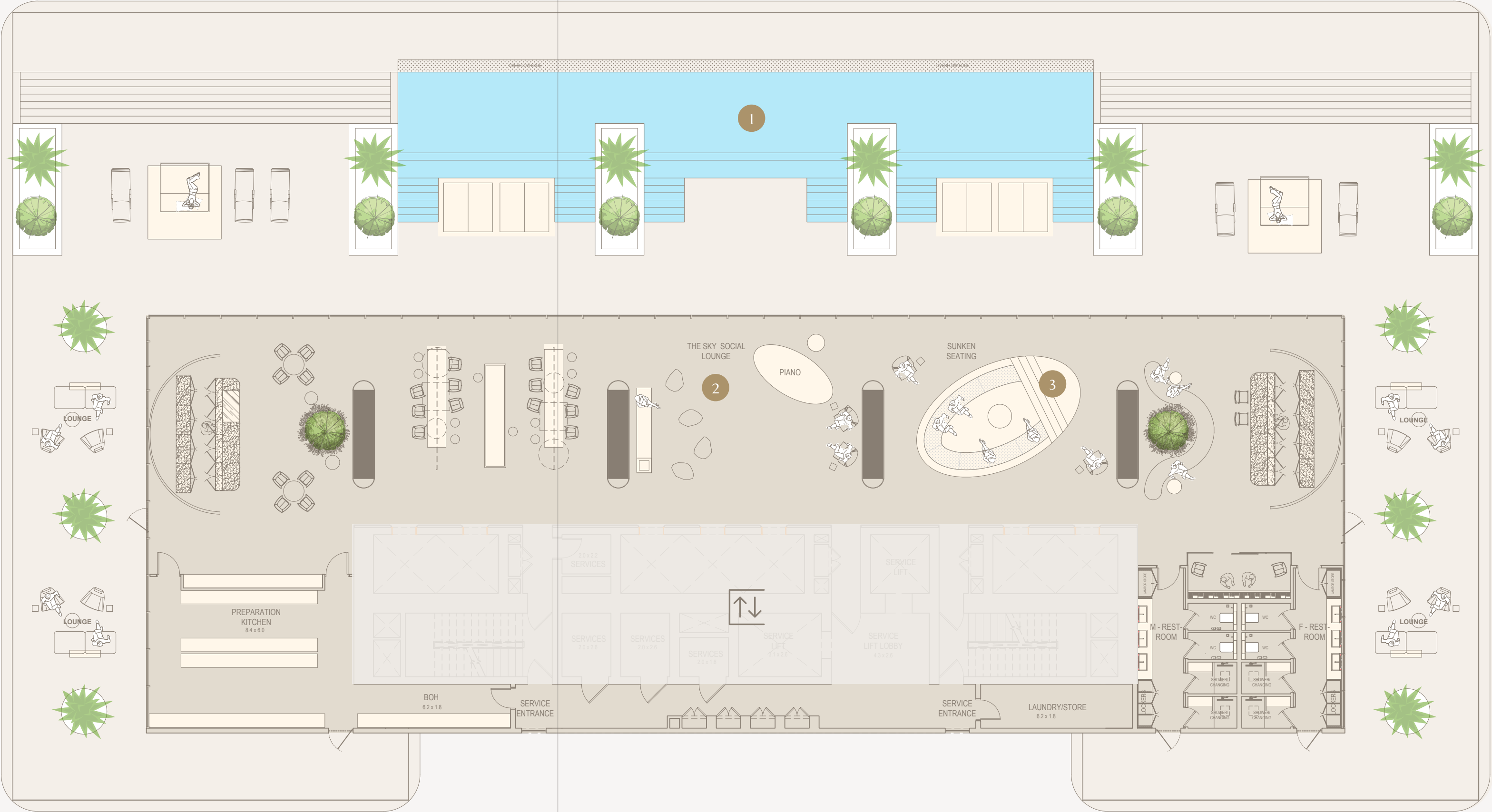


INFINITY POOL



# THE SKY SOCIAL FLOOR PLAN

- 1 ADULTS-ONLY INFINITY POOL & DECK
- 2 SKY SOCIAL LOUNGE
- 3 SUNKEN LOUNGE





# THE RESIDENCES



# *DISTINCTIVE* IN EVERY ASPECT

Embodying The Chedi’s signature serene aesthetic, where functionality, privacy and harmony coexist effortlessly, each residence is meticulously crafted with an uncompromising commitment to quality.



FORMAL LIVING & DINING ROOM

Open-plan living and dining spaces are framed by 3.2-meter floor-to-ceiling windows. Expansive sky gardens extend 5 meters towards the horizon, offering unparalleled views of Dubai’s iconic skyline for tranquil moments above the city’s heartbeat.

Luxury interiors are thoughtfully curated, featuring social kitchens by pioneering Italian designer Pedini, exquisite Miele appliances, and elegant travertine floors and countertops. Bathrooms are equipped with smart mirrors and top-of-the-range Kohler and Hansgrohe fixtures, creating a spa-inspired retreat at home.



# ARCHITECTURE

FLOORS 34 TO 44  
SERENITY VILLAS (3 BEDROOM)

FLOORS 19 TO 30  
SANCTUARY VILLAS (2 BEDROOM)  
SERENITY VILLAS (3 BEDROOM)

FLOORS 8 TO 15  
SANCTUARY VILLAS (2 BEDROOM)  
SERENITY VILLAS (3 BEDROOM)







# SANCTUARY VILLAS

2 BEDROOM

Nestled within the lower floors of this architectural marvel, the Sanctuary Villas offer an intimate retreat from urban life. These thoughtfully designed residences combine form and function to create spaces that feel both grand and welcoming. With semi-private elevator lobbies and expansive sky gardens, each home provides a serene environment where privacy and comfort coexist in perfect harmony.



LIVING ROOM





FORMAL LIVING ROOM AND SKY GARDEN





MASTER BEDROOM



WALK-IN CLOSET



MASTER BATHROOM





## SERENITY VILLAS

3 BEDROOM

The Serenity Villas embody the essence of harmonious living, where every detail has been carefully considered to create an atmosphere of understated luxury. Sweeping sky gardens frame spectacular views of Palm Jumeirah, while open-plan living spaces flow seamlessly from one area to the next. These residences offer an elevated living experience where sophisticated design meets practical elegance.



FORMAL LIVING ROOM





SKY GARDEN





CHEF'S KITCHEN



MASTER BATHROOM



FORMAL LIVING ROOM



MASTER BEDROOM



# ARCHITECTURE

FLOORS 34 TO 44  
HORIZON VILLAS (4 BEDROOM)

---







# HORIZON VILLAS

4 BEDROOM

Experience the epitome of sky-high living in the Horizon Villas, where breathtaking views of Dubai's iconic skyline and the Emirates Golf Club create an ever-changing backdrop to daily life. These sprawling residences feature private elevator access and full-width sky gardens and terraces, offering a true villa-in-the-sky experience. Each suite has been masterfully crafted to maximise both space and sophistication, creating homes that are as impressive as they are welcoming.



LIVING ROOM





DINING ROOM



KITCHEN





MASTER BATHROOM



MASTER BEDROOM



WALK-IN CLOSET



# ARCHITECTURE

FLOORS 48 & 49  
SIGNATURE DUPLEX VILLAS (5 BEDROOM DUPLEX)

FLOORS 31 & 32  
SIGNATURE DUPLEX VILLAS (5 BEDROOM DUPLEX)

FLOORS 16 & 17  
SIGNATURE DUPLEX VILLAS (5 BEDROOM DUPLEX)





## SIGNATURE DUPLEX VILLAS

### 5 BEDROOM DUPLEX

Six exceptional duplex residences redefine luxury living through their innovative split-level design. These magnificent homes feature private pools and gallery mezzanines that create a sense of vertical grandeur, while floor-to-ceiling windows frame 180-degree views of Dubai's mesmerising cityscape. Natural light floods through multiple levels, creating an atmosphere of boundless space and refined elegance.









MASTER BEDROOM



MASTER BATHROOM







# ARCHITECTURE

FLOORS 48 & 49  
THE SKY MANSION (6 BEDROOM)

---





## THE SKY MANSION

### 6 BEDROOM MANSION

Crowning the tower's upper levels, the Sky Mansion represents the apex of sophisticated living. This two-level masterpiece features expansive 360-degree terraces that seamlessly blend indoor and outdoor living. Complete with a home spa within the six-bedroom mansion and a private gym, this residence offers an unparalleled living experience where luxury knows no bounds. Every detail has been meticulously crafted to create a home that stands as a testament to exceptional living.





FORMAL LIVING & DINING ROOM



SKY GARDEN WITH PRIVATE POOL





MASTER BEDROOM



# ARCHITECTURE

FLOORS 50, 51 & 52  
THE PINNACLE MANSION (8 BEDROOM)

---





# THE PINNACLE MANSION

## 8 BEDROOM PENTHOUSE

The crown jewel of The Chedi Private Residences, this magnificent three-level Mansion redefines the possibilities of luxury living. Spanning three full floors, it offers unprecedented space and privacy along with sweeping panoramic views of Dubai's skyline. Featured amenities include private wellness facilities, an infinity pool, and multiple entertainment areas, all finished with bespoke materials and furnishings that epitomize ultimate refinement. This one-of-a-kind residence represents the pinnacle of exclusive living, offering an unmatched level of sophistication and privacy for those who accept nothing less than extraordinary.





FORMAL DINING ROOM



STUDY AND LOUNGE





SKY GARDEN WITH PRIVATE POOL





MASTER BATHROOM



PRIVATE GYM



PRIVATE SPA



# REWARDING *DISTINCTION*

Owners benefit from a distinguished program offering exclusive rates across The Chedi global portfolio of hotels from upgrades, extended check-in/ check-out times, invite-only events and attractive discounts on world-class dining and spa services.







# EXCLUSIVE *BESPOKE* SERVICES

The Chedi Private Residences redefine bespoke living with an extensive suite of personalised services. From 24-hour concierge support and dedicated butler assistance to tailored ‘away-from-home’ packages, every detail is seamlessly taken care of. Returning home becomes an unparalleled experience—with customized pantry stocking, impeccable housekeeping, and seamless event planning at your service. Owners also enjoy exclusive privileges, including a bespoke welcome pack featuring a luxury tea set, privileged access to global Chedi properties, and curated shopping experiences with celebrity designers. Enhancing daily convenience, the resident-exclusive app offers seamless access to bookings, concierge services, and personalized assistance—ensuring effortless living at every moment.



## Core Services

- ‘Chedi Navigator’ Concierge Services
- Mail and Package Handling
- Doorman and Porter Assistance
- Secure Parking Facilities
- Round-the-Clock Security
- Common Area Maintenance & Housekeeping
- Wi-fi Internet Access throughout Common Areas and Public Facilities
- General and Administrative
- Function / Event Planning
- Plant Care Maintenance
- Alteration Services

## À La Carte Services

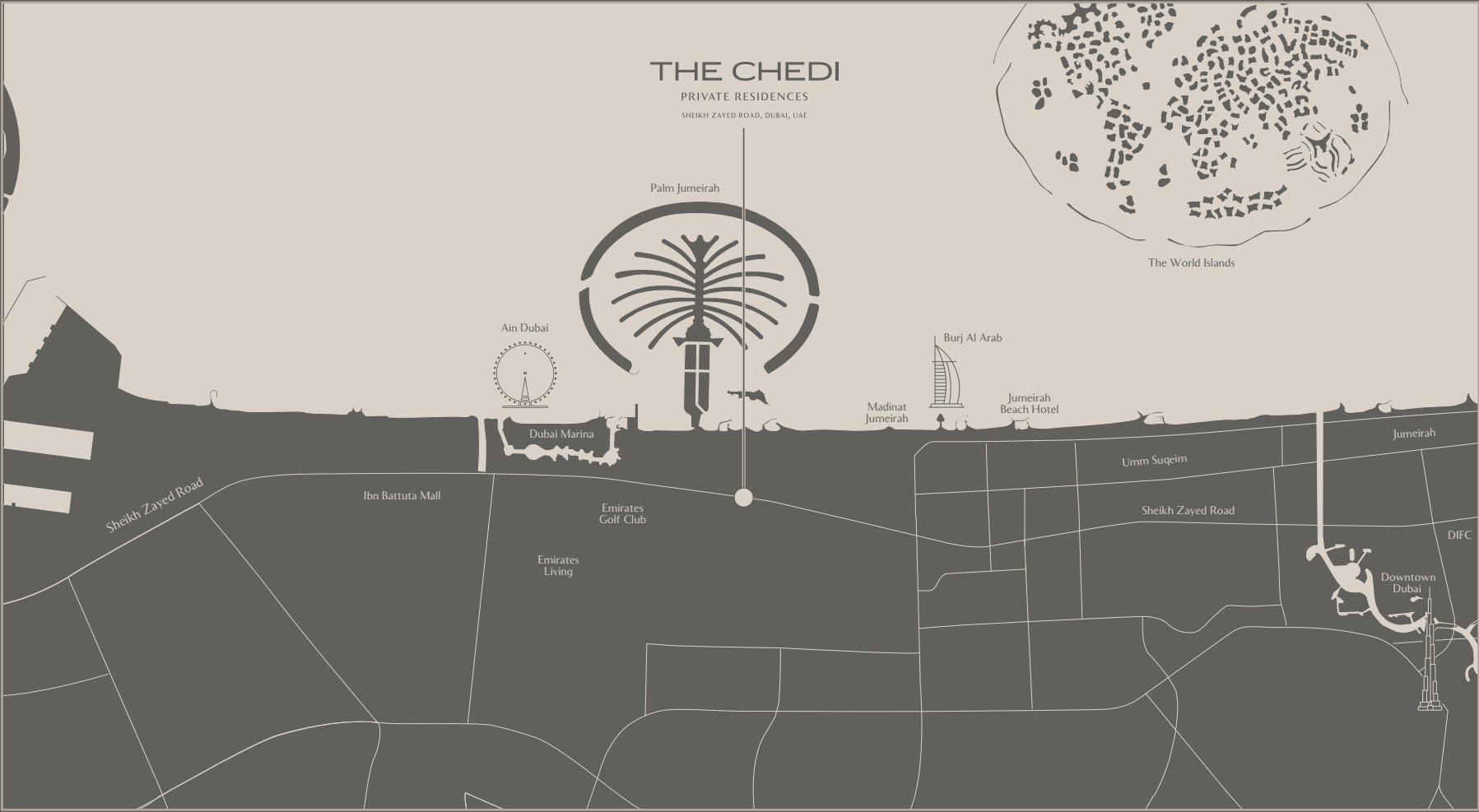
- The Chedi Personal Butler
- ‘While You’re Away and Everyday’ Service Support
- Nanny / Child Care Services
- Carwash Services
- Laundry and Dry Cleaning
- Alteration Services
- Private Transportation and Limousine Services
- In Residence Housekeeping & Maintenance
- Florist Services
- Non-routine or Specialised Repair and Maintenance
- Pet-Minding
- Private Event with Private Chef





SEAMLESS  
CONNECTIVITY  
BETWEEN  
URBAN LIVING AND  
*PRIVATE SANCTUARY*

Nestled in the heart of Dubai’s dynamic landscape, yet offering a serene retreat, this prime location provides seamless access to the city’s most iconic landmarks. Just minutes from world-class dining, shopping, and entertainment, it seamlessly blends convenience with indulgence for a truly elevated lifestyle.



1

Minute from  
Sheikh Zayed Road

5

Minutes to  
Emirates Golf Club

5

Minutes to  
Beaches

6

Minutes to  
Mall of the Emirates

6

Minutes to  
Dubai Marina

10

Minutes to  
Palm Jumeriah

10

Minutes to  
Burj Al Arab

10

Minutes to Jumeirah  
Beach Residence

15

Minutes to  
Downtown Dubai

20

Minutes to Dubai  
International Airport



# FLOOR PLANS



SANCTUARY VILLAS

2 BEDROOM WEST

2 BEDS | 3 BATHS & POWDER ROOM | MAID’S ROOM  
SEMI-PRIVATE LOBBY | PANORAMIC TERRACE

	sqm	sqft
Suite Area	252.65	2,719.50
Terrace Area	77.72	836.57
Total Area	330.37	3,556.07

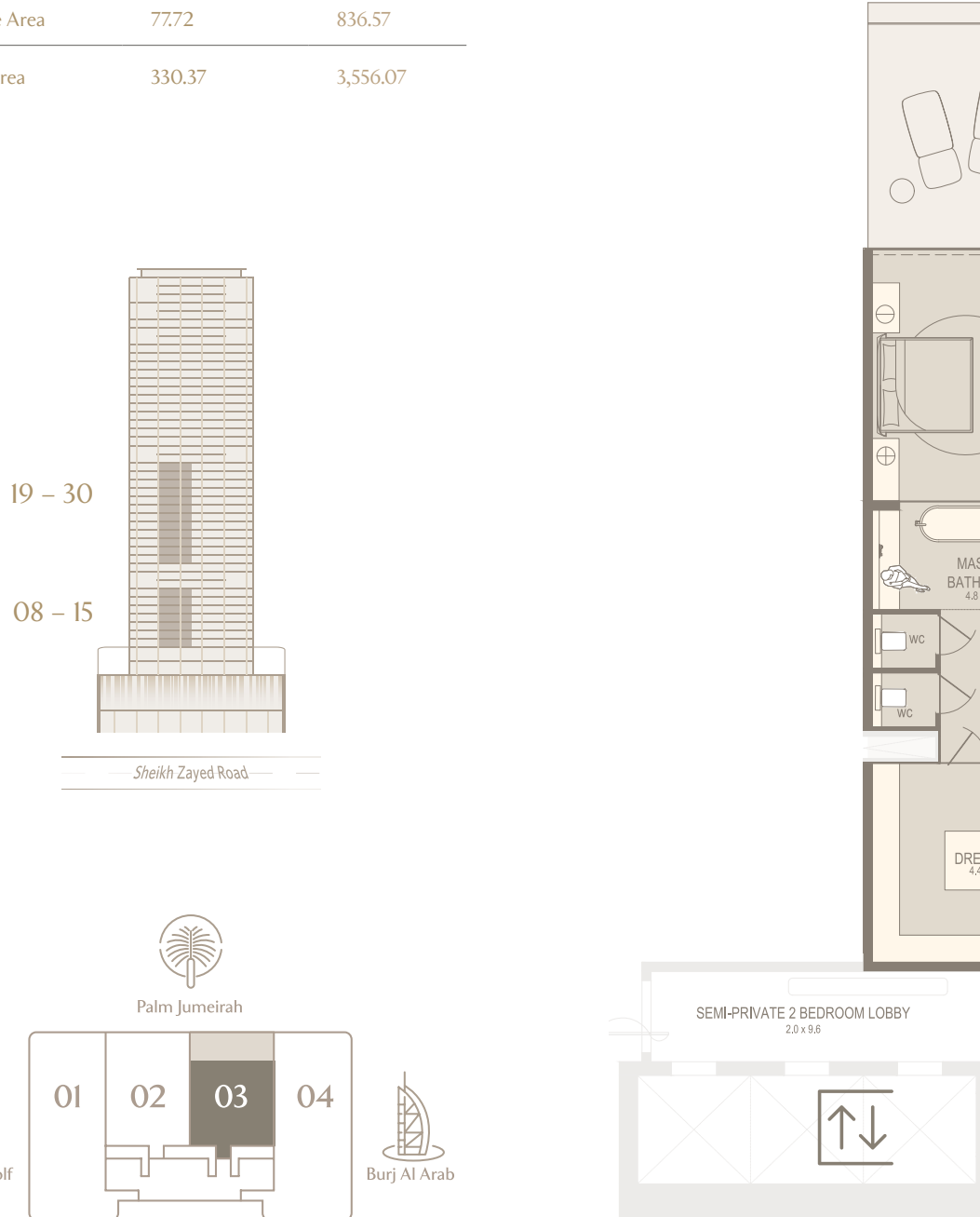


SANCTUARY VILLAS

2 BEDROOM EAST

2 BEDS | 3 BATHS & POWDER ROOM | MAID’S ROOM  
SEMI-PRIVATE LOBBY | PANORAMIC TERRACE

	sqm	sqft
Suite Area	252.65	2,719.50
Terrace Area	77.72	836.57
Total Area	330.37	3,556.07



Disclaimer: Any images and visualizations contained herein are provided for illustrative and marketing purposes only. All information contained herein is subject to change without notice and without liability and only the information contained in the final Sales and Purchase Agreement entered into between the Developer and Buyer will have any legal effect. All drawings and dimensions are approximate. Drawings are not to scale and subject to change without notice. The Developer reserves the right to make revisions. The units are taken from the typical floor of a building and dimensions of the units, balcony and the size of columns may vary depending on the floor level and orientation of the unit within the building to comply with the building authority regulations. E&OE

Disclaimer: Any images and visualizations contained herein are provided for illustrative and marketing purposes only. All information contained herein is subject to change without notice and without liability and only the information contained in the final Sales and Purchase Agreement entered into between the Developer and Buyer will have any legal effect. All drawings and dimensions are approximate. Drawings are not to scale and subject to change without notice. The Developer reserves the right to make revisions. The units are taken from the typical floor of a building and dimensions of the units, balcony and the size of columns may vary depending on the floor level and orientation of the unit within the building to comply with the building authority regulations. E&OE

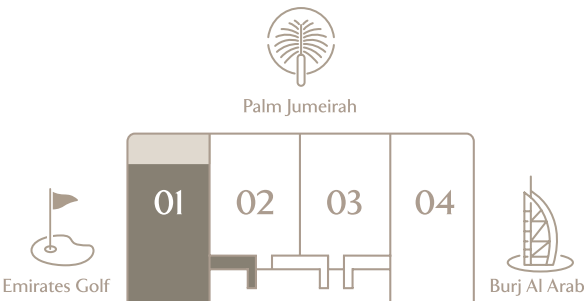
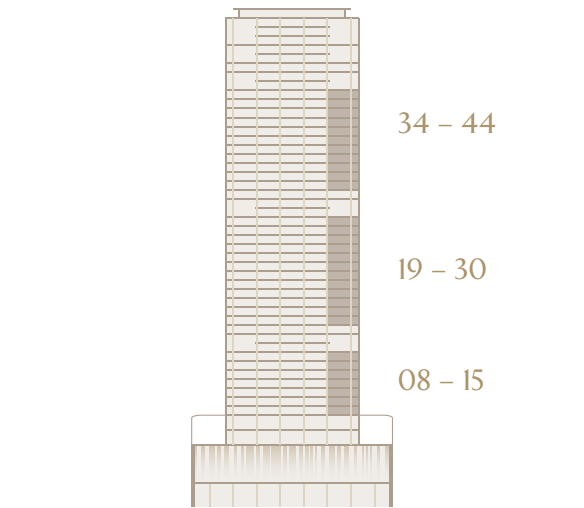


SERENITY VILLAS

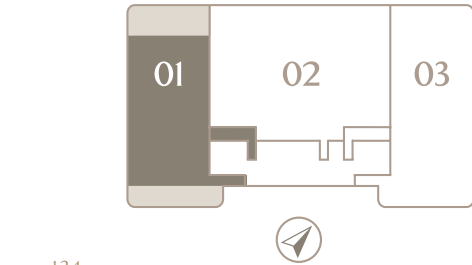
3 BEDROOM WEST

3 BEDS | 4 BATHS & POWDER ROOM | MAID’S ROOM  
PRIVATE LOBBY | BURJ AL ARAB & PALM JUMEIRAH VIEWS

	sqm	sqft
Suite Area	410.61	4,419.77
Terrace Area	117.89	1,268.96
Total Area	528.50	5,688.73



Levels 34 – 44



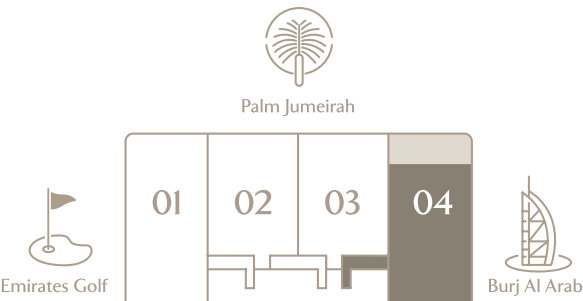
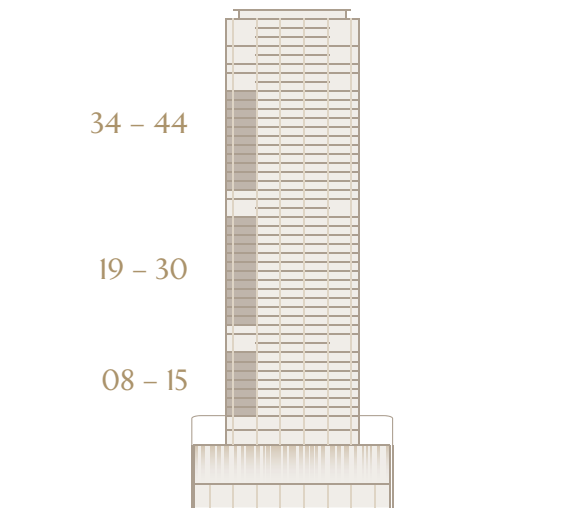
Disclaimer: Any images and visualizations contained herein are provided for illustrative and marketing purposes only. All information contained herein is subject to change without notice and without liability and only the information contained in the final Sales and Purchase Agreement entered into between the Developer and Buyer will have any legal effect. All drawings and dimensions are approximate. Drawings are not to scale and subject to change without notice. The Developer reserves the right to make revisions. The units are taken from the typical floor of a building and dimensions of the units, balcony and the size of columns may vary depending on the floor level and orientation of the unit within the building to comply with the building authority regulations. E&OE

SERENITY VILLAS

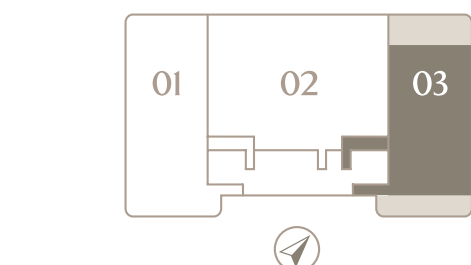
3 BEDROOM EAST

3 BEDS | 4 BATHS & POWDER ROOM | MAID’S ROOM  
PRIVATE LOBBY | BURJ AL ARAB & PALM JUMEIRAH VIEWS

	sqm	sqft
Suite Area	410.70	4,420.74
Terrace Area	117.89	1,268.96
Total Area	528.59	5,689.70



Levels 34 – 44



Disclaimer: Any images and visualizations contained herein are provided for illustrative and marketing purposes only. All information contained herein is subject to change without notice and without liability and only the information contained in the final Sales and Purchase Agreement entered into between the Developer and Buyer will have any legal effect. All drawings and dimensions are approximate. Drawings are not to scale and subject to change without notice. The Developer reserves the right to make revisions. The units are taken from the typical floor of a building and dimensions of the units, balcony and the size of columns may vary depending on the floor level and orientation of the unit within the building to comply with the building authority regulations. E&OE





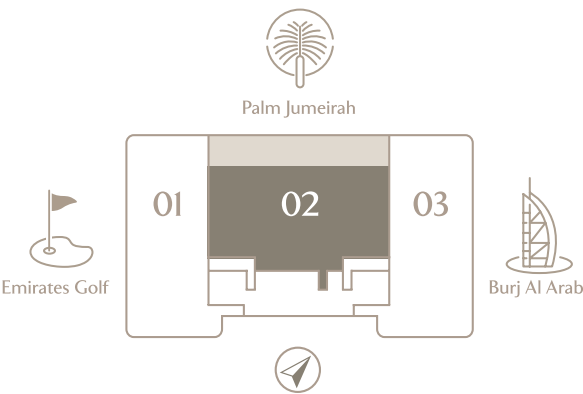
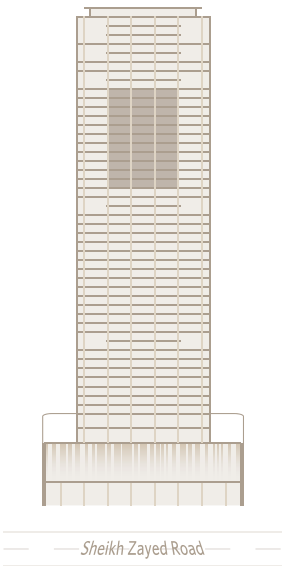
## HORIZON VILLAS

4 BEDROOM

4 BEDS | 6 BATHS & POWDER ROOM | MAID'S & DRIVER'S ROOM  
PRIVATE LOBBY | EXTENDED PANORAMIC TERRACE

	sqm	sqft
Suite Area	532.38	5,730.49
Terrace Area	155.53	1,674.11
Total Area	687.91	7,404.60

34 – 44



Disclaimer: Any images and visualizations contained herein are provided for illustrative and marketing purposes only. All information contained herein is subject to change without notice and without liability and only the information contained in the final Sales and Purchase Agreement entered into between the Developer and Buyer will have any legal effect. All drawings and dimensions are approximate. Drawings are not to scale and subject to change without notice. The Developer reserves the right to make revisions. The units are taken from the typical floor of a building and dimensions of the units, balcony and the size of columns may vary depending on the floor level and orientation of the unit within the building to comply with the building authority regulations. E&OE

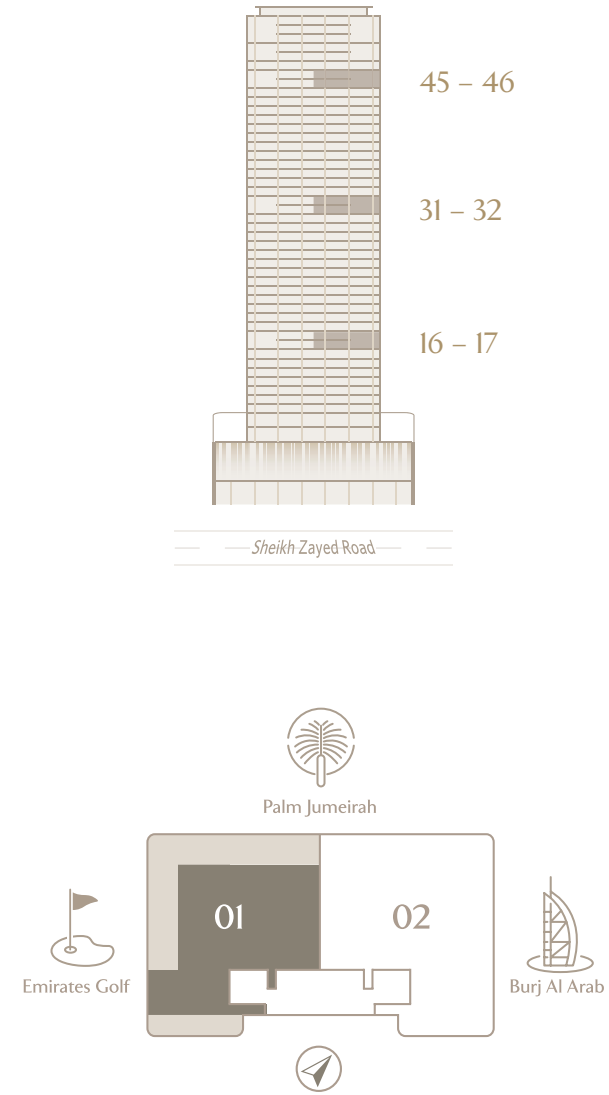


SIGNATURE DUPLEX VILLAS (LEVEL 1)

5 BEDROOM DUPLEX WEST

5 BEDS | 9 BATHS & 2 POWDER ROOMS | 3 STAFF QUARTERS  
PRIVATE POOL & BBQ AREA | MARINA & PALM JUMEIRAH VIEWS

	sqm	sqft
Level 1 Suite Area	540.05	5,813.05
Level 1 Terrace Area	332.09	3,574.59
Level 1 Total Area	872.14	9,387.64



Disclaimer: Any images and visualizations contained herein are provided for illustrative and marketing purposes only. All information contained herein is subject to change without notice and without liability and only the information contained in the final Sales and Purchase Agreement entered into between the Developer and Buyer will have any legal effect. All drawings and dimensions are approximate. Drawings are not to scale and subject to change without notice. The Developer reserves the right to make revisions. The units are taken from the typical floor of a building and dimensions of the units, balcony and the size of columns may vary depending on the floor level and orientation of the unit within the building to comply with the building authority regulations. E&OE

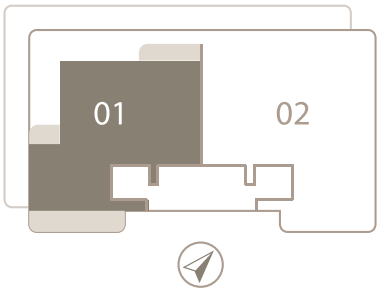
SIGNATURE DUPLEX VILLAS (LEVEL 2)

5 BEDROOM DUPLEX WEST

5 BEDS | 9 BATHS & 2 POWDER ROOMS | 3 STAFF QUARTERS  
PRIVATE POOL & BBQ AREA | MARINA & PALM JUMEIRAH VIEWS

	sqm	sqft
Level 2 Suite Area	492.42	5,300.36
Level 2 Terrace Area	114.59	1,233.44
Level 2 Total Area	607.01	6,533.80

	sqm	sqft
Total Suite Area	1,032.47	11,113.41
Total Terrace Area	446.68	4,808.02
Total Area	1,479.15	15,921.44



Disclaimer: Any images and visualizations contained herein are provided for illustrative and marketing purposes only. All information contained herein is subject to change without notice and without liability and only the information contained in the final Sales and Purchase Agreement entered into between the Developer and Buyer will have any legal effect. All drawings and dimensions are approximate. Drawings are not to scale and subject to change without notice. The Developer reserves the right to make revisions. The units are taken from the typical floor of a building and dimensions of the units, balcony and the size of columns may vary depending on the floor level and orientation of the unit within the building to comply with the building authority regulations. E&OE

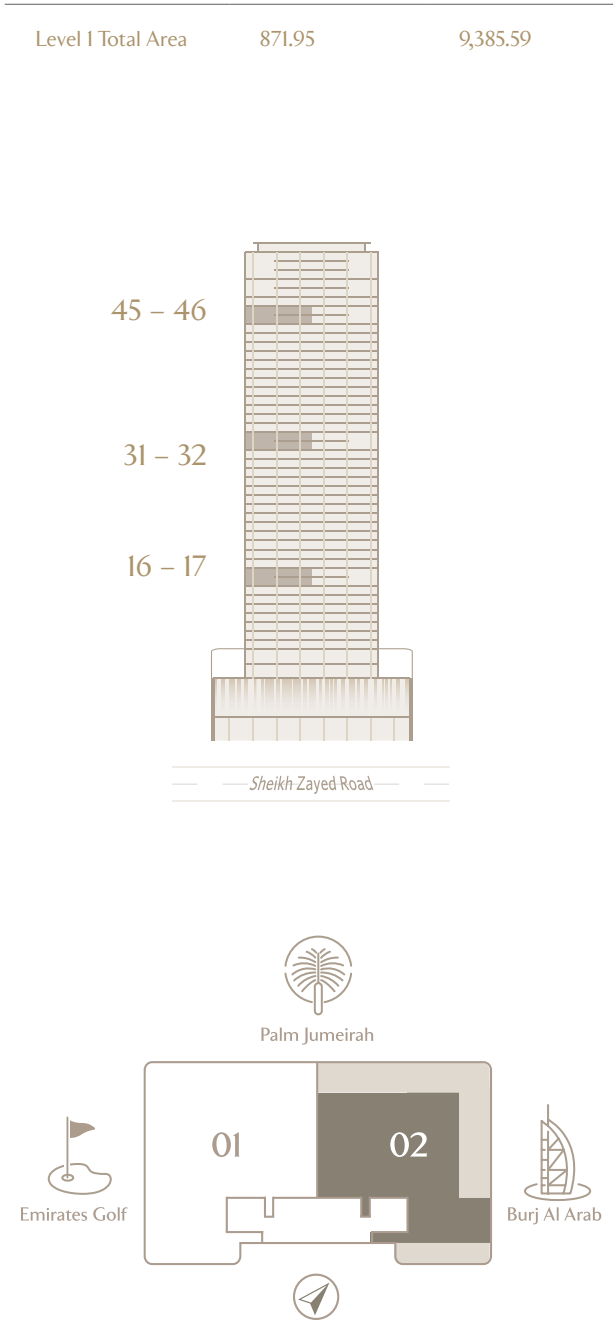


SIGNATURE DUPLEX VILLAS (LEVEL 1)

5 BEDROOM DUPLEX EAST

5 BEDS | 9 BATHS & 2 POWDER ROOMS | 3 STAFF QUARTERS  
PRIVATE POOL & BBQ AREA | BURJ AL ARAB & PALM JUMEIRAH VIEWS

	sqm	sqft
Level 1 Suite Area	539.86	5,811.00
Level 1 Terrace Area	332.09	3,574.59
Level 1 Total Area	871.95	9,385.59



Disclaimer: Any images and visualizations contained herein are provided for illustrative and marketing purposes only. All information contained herein is subject to change without notice and without liability and only the information contained in the final Sales and Purchase Agreement entered into between the Developer and Buyer will have any legal effect. All drawings and dimensions are approximate. Drawings are not to scale and subject to change without notice. The Developer reserves the right to make revisions. The units are taken from the typical floor of a building and dimensions of the units, balcony and the size of columns may vary depending on the floor level and orientation of the unit within the building to comply with the building authority regulations. E&OE

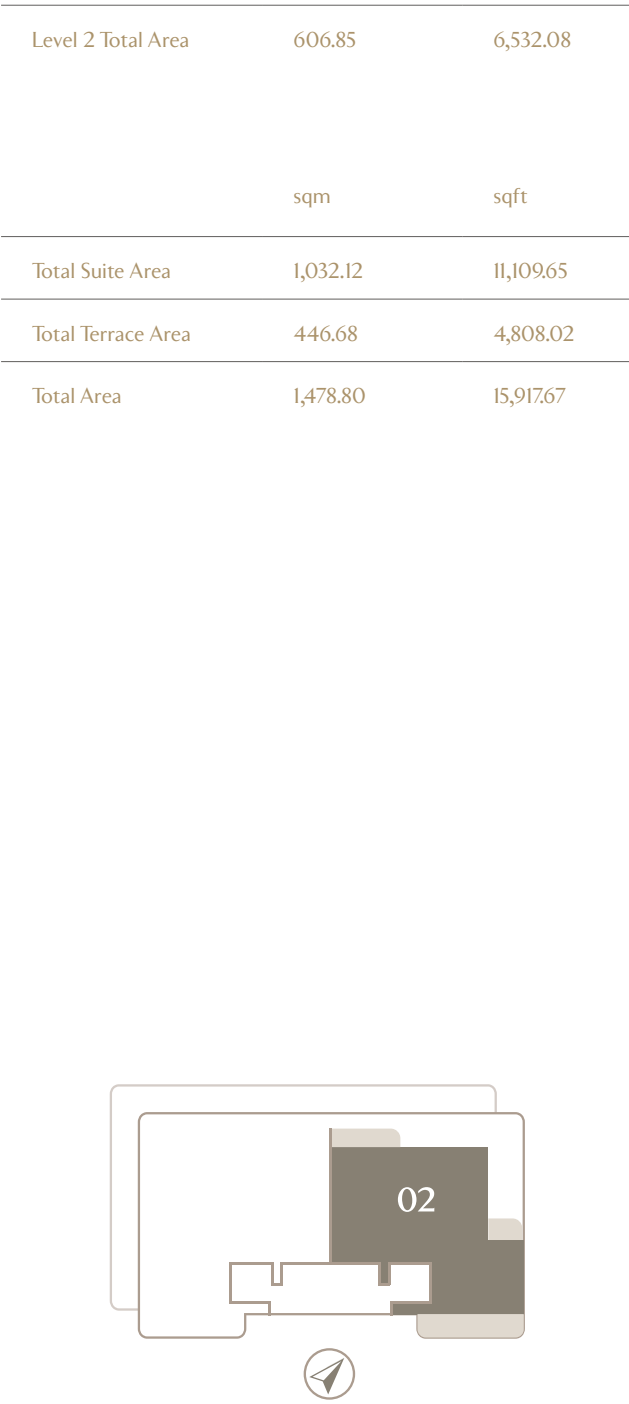
SIGNATURE DUPLEX VILLAS (LEVEL 2)

5 BEDROOM DUPLEX EAST

5 BEDS | 9 BATHS & 2 POWDER ROOMS | 3 STAFF QUARTERS  
PRIVATE POOL & BBQ AREA | BURJ AL ARAB & PALM JUMEIRAH VIEWS

	sqm	sqft
Level 2 Suite Area	492.26	5,298.64
Level 2 Terrace Area	114.59	1,233.44
Level 2 Total Area	606.85	6,532.08

	sqm	sqft
Total Suite Area	1,032.12	11,109.65
Total Terrace Area	446.68	4,808.02
Total Area	1,478.80	15,917.67



Disclaimer: Any images and visualizations contained herein are provided for illustrative and marketing purposes only. All information contained herein is subject to change without notice and without liability and only the information contained in the final Sales and Purchase Agreement entered into between the Developer and Buyer will have any legal effect. All drawings and dimensions are approximate. Drawings are not to scale and subject to change without notice. The Developer reserves the right to make revisions. The units are taken from the typical floor of a building and dimensions of the units, balcony and the size of columns may vary depending on the floor level and orientation of the unit within the building to comply with the building authority regulations. E&OE

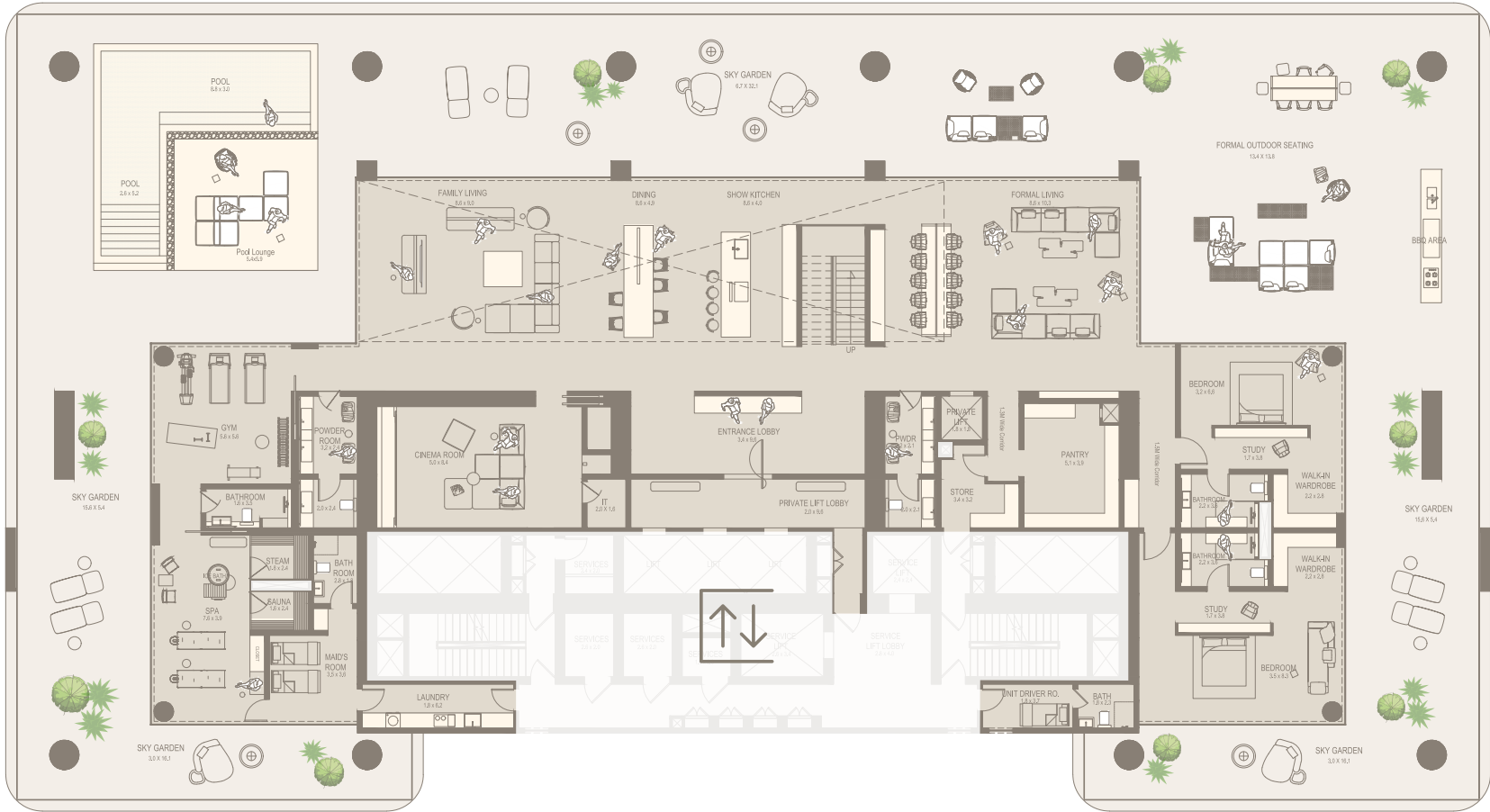
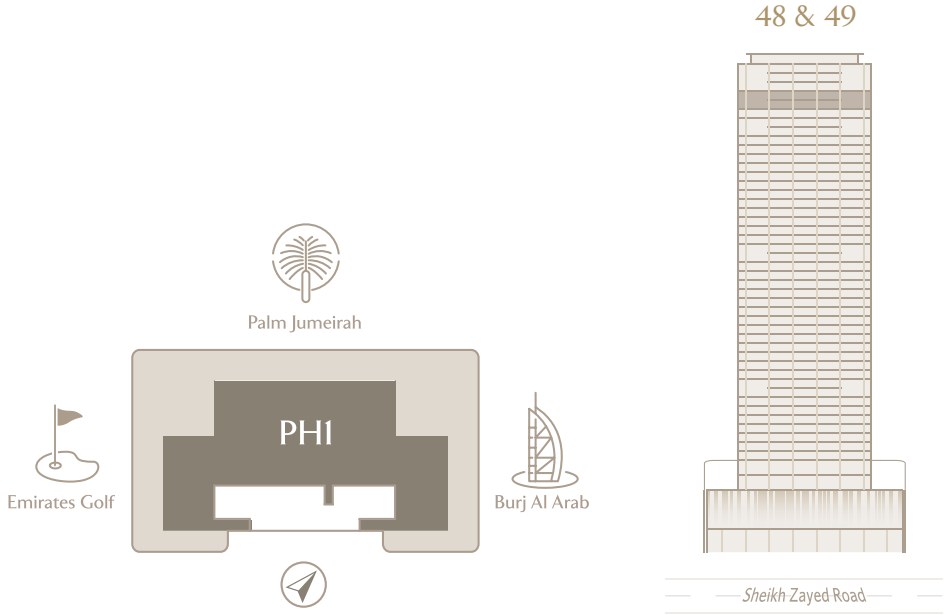


THE SKY MANSION (LEVEL 1)

6 BEDROOM PENTHOUSE DUPLEX

6 BEDS | 10 BATHS & 2 POWDER ROOMS | ONE OF A KIND  
360° PANORAMIC TERRACE | PRIVATE WELLNESS AMENITIES

	sqm	sqft
Level 1 Suite Area	761.28	8,194.35
Level 1 Terrace Area	860.10	9,258.04
Level 1 Total Area	1621.38	17,452.39



Disclaimer: Any images and visualizations contained herein are provided for illustrative and marketing purposes only. All information contained herein is subject to change without notice and without liability and only the information contained in the final Sales and Purchase Agreement entered into between the Developer and Buyer will have any legal effect. All drawings and dimensions are approximate. Drawings are not to scale and subject to change without notice. The Developer reserves the right to make revisions. The units are taken from the typical floor of a building and dimensions of the units, balcony and the size of columns may vary depending on the floor level and orientation of the unit within the building to comply with the building authority regulations. E&OE

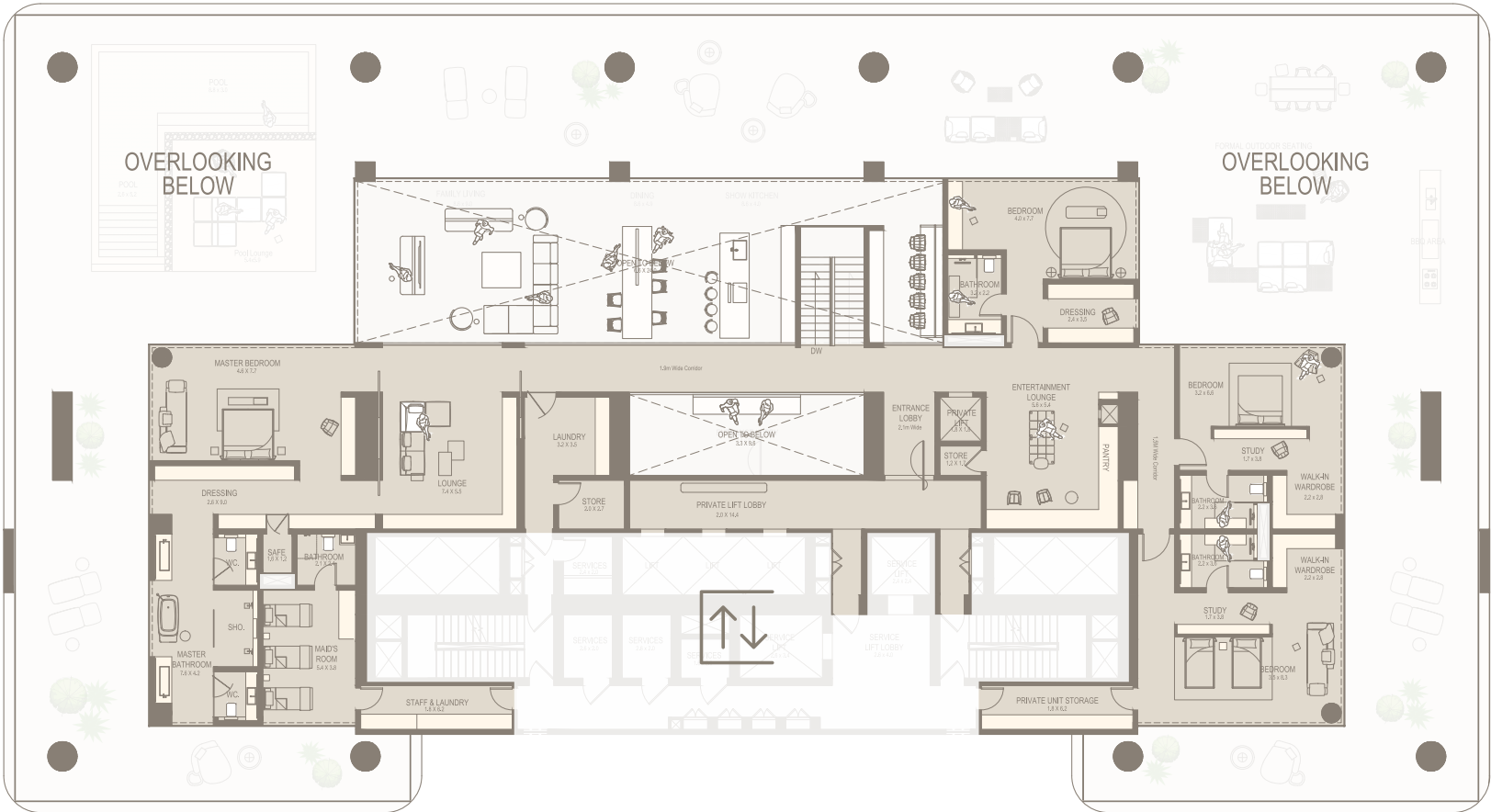
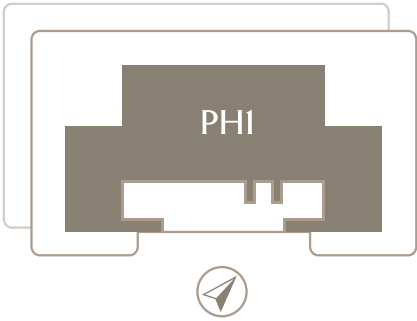
THE SKY MANSION (LEVEL 2)

6 BEDROOM PENTHOUSE DUPLEX

6 BEDS | 10 BATHS & 2 POWDER ROOMS | ONE OF A KIND  
360° PANORAMIC TERRACE | PRIVATE WELLNESS AMENITIES

	sqm	sqft
Level 2 Suite Area	586.83	6,316.59
Level 2 Terrace Area	-	-
Level 2 Total Area	586.83	6,316.59

	sqm	sqft
Total Suite Area	1,348.11	14,510.94
Total Terrace Area	860.10	9,258.04
Total Area	2,208.21	23,768.97



Disclaimer: Any images and visualizations contained herein are provided for illustrative and marketing purposes only. All information contained herein is subject to change without notice and without liability and only the information contained in the final Sales and Purchase Agreement entered into between the Developer and Buyer will have any legal effect. All drawings and dimensions are approximate. Drawings are not to scale and subject to change without notice. The Developer reserves the right to make revisions. The units are taken from the typical floor of a building and dimensions of the units, balcony and the size of columns may vary depending on the floor level and orientation of the unit within the building to comply with the building authority regulations. E&OE



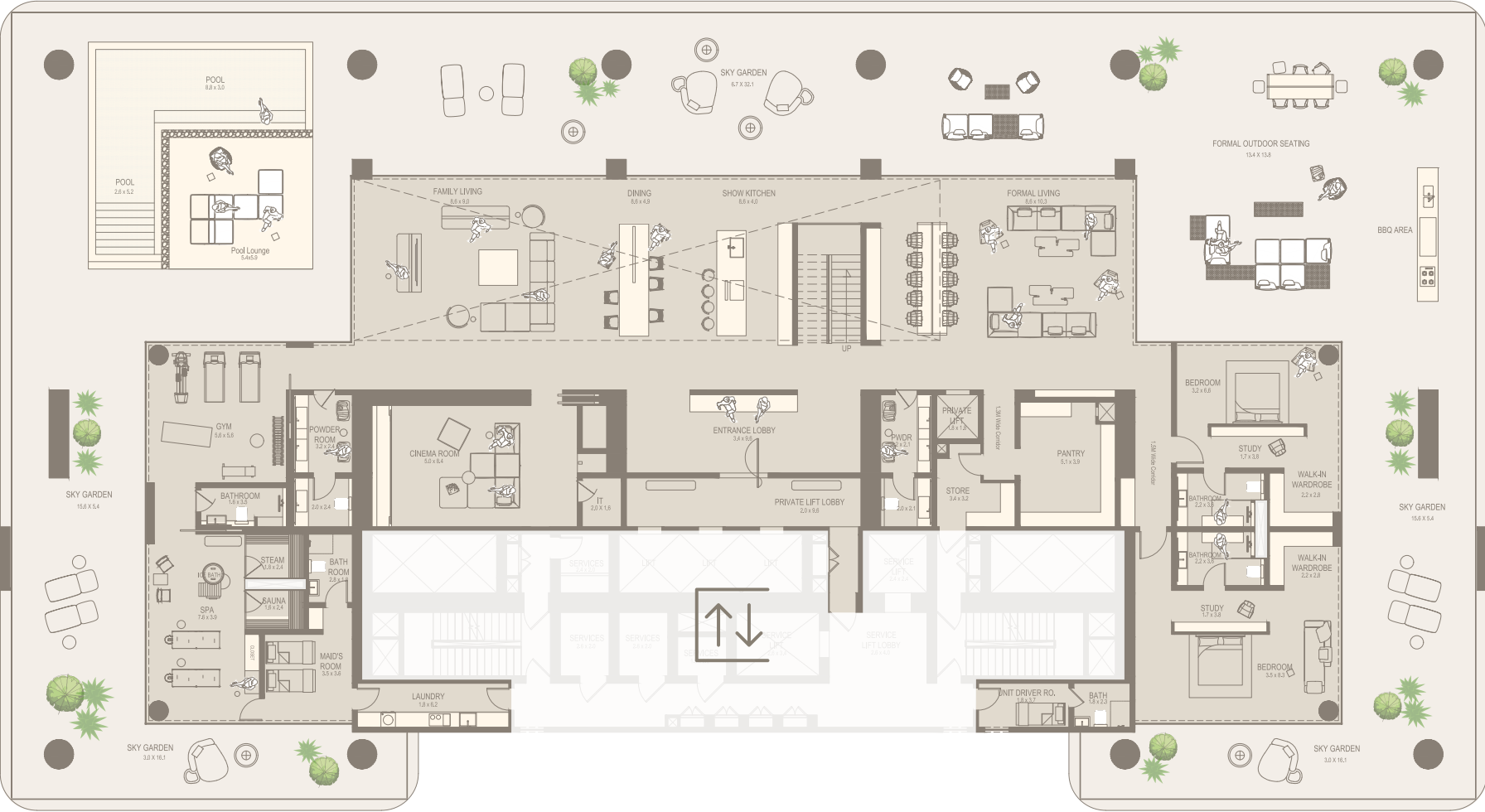
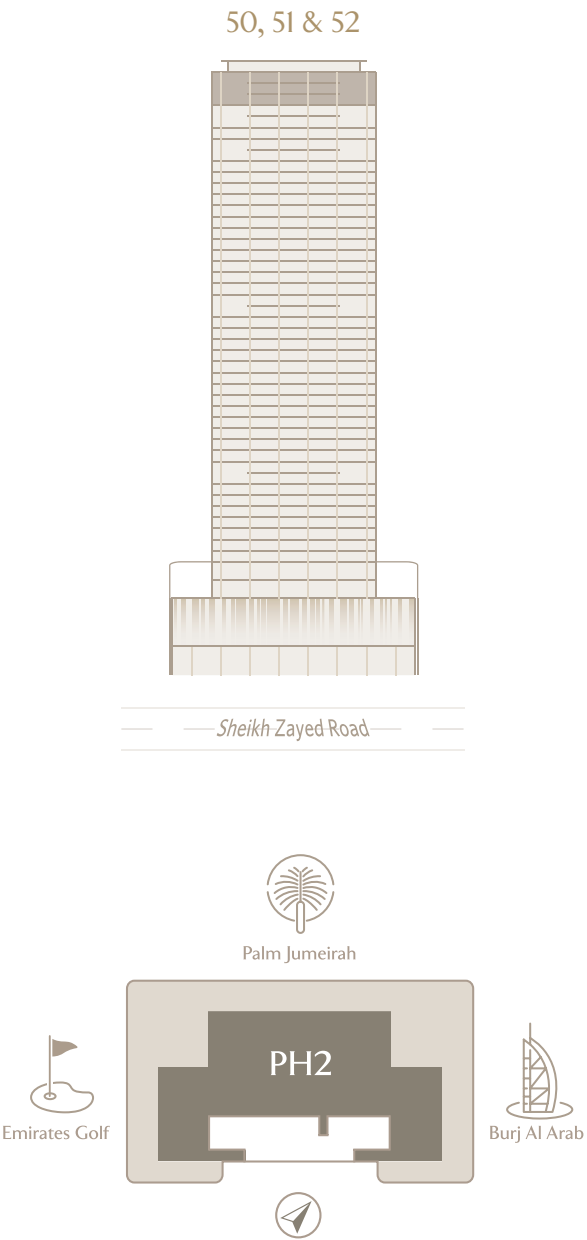


THE PINNACLE MANSION (LEVEL 1)

8 BEDROOM PENTHOUSE TRIPLEX

8 BEDS | 14 BATHS & 2 POWDER ROOMS | ONE OF A KIND  
360° PANORAMIC TERRACE | PRIVATE WELLNESS AMENITIES

	sqm	sqft
Level 1 Suite Area	761.28	8,194.35
Level 1 Terrace Area	860.08	9,257.82
Level 1 Total Area	1,621.36	17,452.17

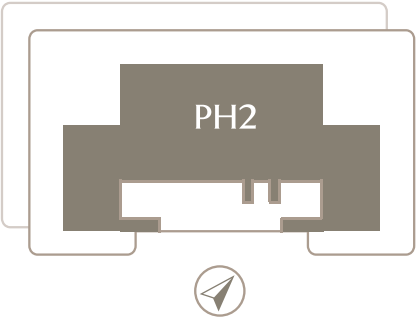


Disclaimer: Any images and visualizations contained herein are provided for illustrative and marketing purposes only. All information contained herein is subject to change without notice and without liability and only the information contained in the final Sales and Purchase Agreement entered into between the Developer and Buyer will have any legal effect. All drawings and dimensions are approximate. Drawings are not to scale and subject to change without notice. The Developer reserves the right to make revisions. The units are taken from the typical floor of a building and dimensions of the units, balcony and the size of columns may vary depending on the floor level and orientation of the unit within the building to comply with the building authority regulations. E&OE

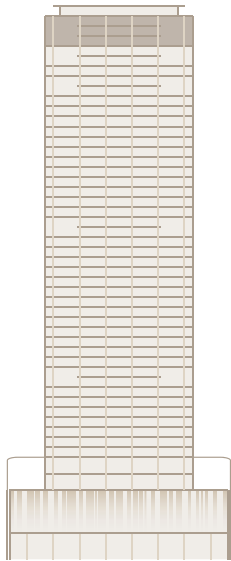


THE PINNACLE MANSION  
(LEVEL 2)

	sqm	sqft
Level 2 Suite Area	588.66	6,336.28
Level 2 Terrace Area	-	-
Level 2 Total Area	588.66	6,336.28



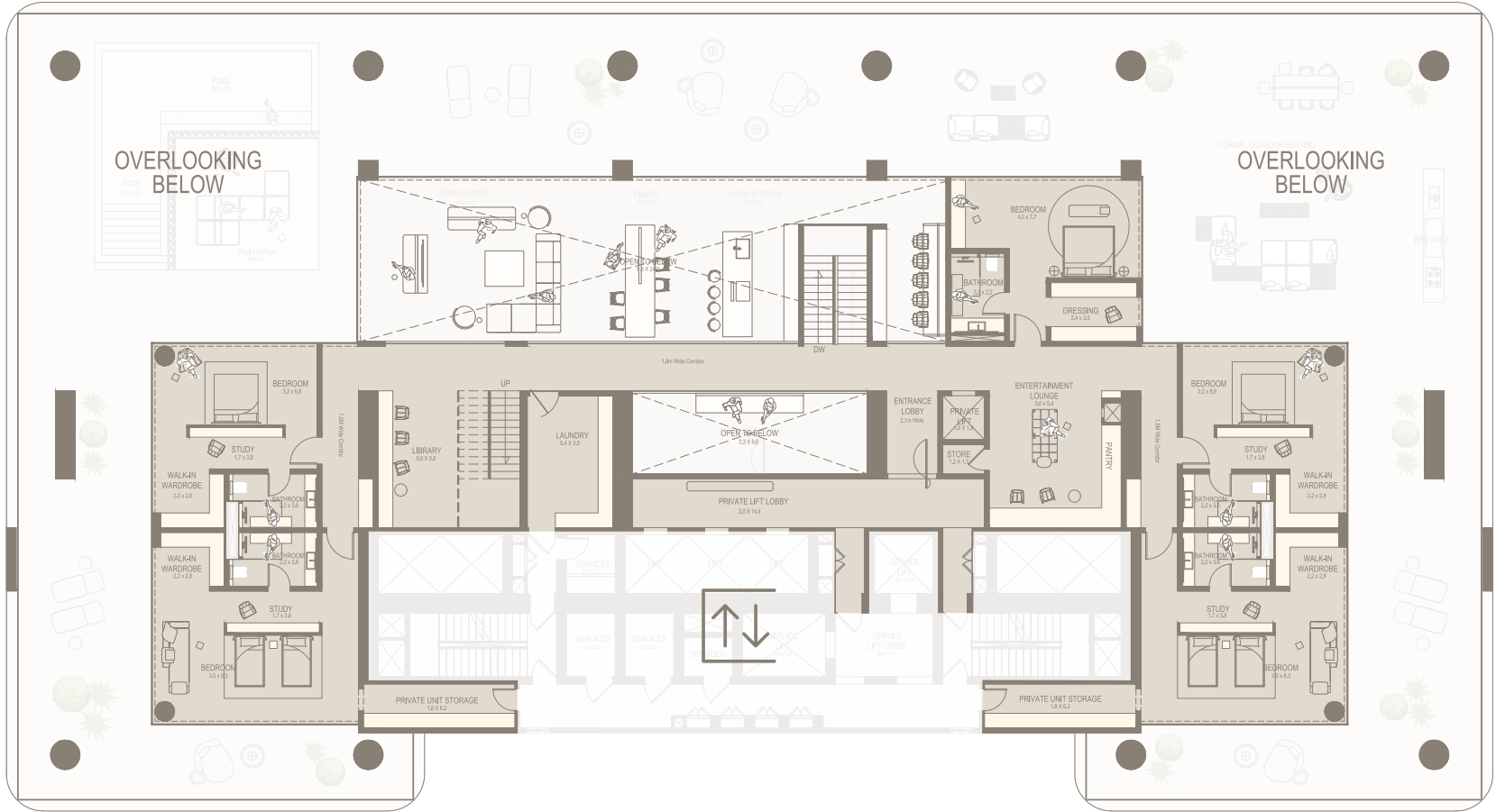
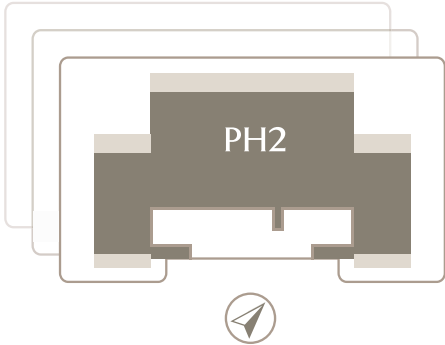
50, 51 & 52



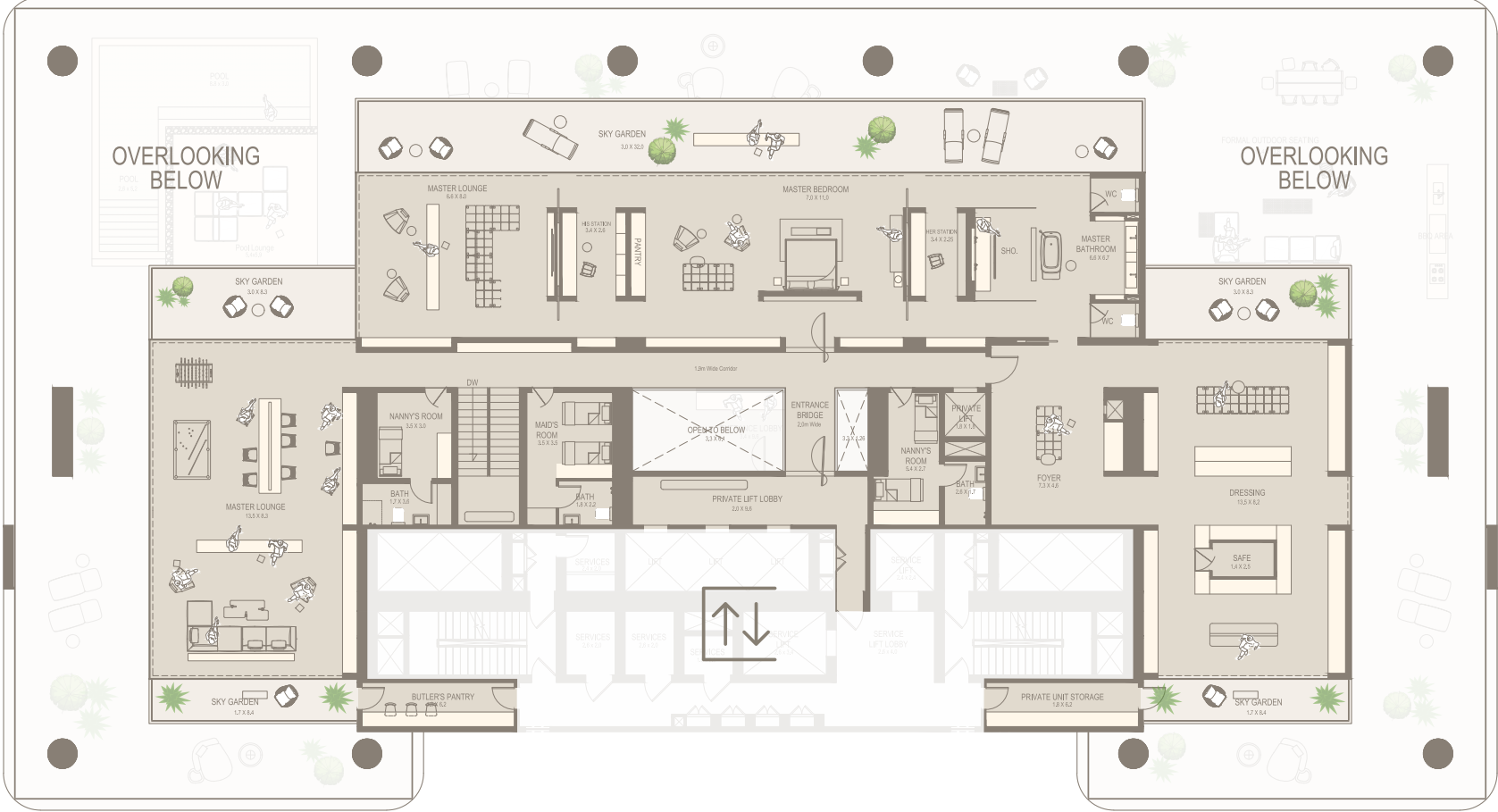
Sheikh Zayed Road

THE PINNACLE MANSION  
(LEVEL 3)

	sqm	sqft		sqm	sqft
Level 3 Suite Area	700.93	7,544.75	Total Suite Area	2,050.87	22,075.38
Level 3 Terrace Area	177.73	1,913.07	Total Terrace Area	1,037.81	11,170.89
Level 3 Total Area	878.66	9,457.82	Total Area	3,088.68	33,246.27



Disclaimer: Any images and visualizations contained herein are provided for illustrative and marketing purposes only. All information contained herein is subject to change without notice and without liability and only the information contained in the final Sales and Purchase Agreement entered into between the Developer and Buyer will have any legal effect. All drawings and dimensions are approximate. Drawings are not to scale and subject to change without notice. The Developer reserves the right to make revisions. The units are taken from the typical floor of a building and dimensions of the units, balcony and the size of columns may vary depending on the floor level and orientation of the unit within the building to comply with the building authority regulations. E&OE



Disclaimer: Any images and visualizations contained herein are provided for illustrative and marketing purposes only. All information contained herein is subject to change without notice and without liability and only the information contained in the final Sales and Purchase Agreement entered into between the Developer and Buyer will have any legal effect. All drawings and dimensions are approximate. Drawings are not to scale and subject to change without notice. The Developer reserves the right to make revisions. The units are taken from the typical floor of a building and dimensions of the units, balcony and the size of columns may vary depending on the floor level and orientation of the unit within the building to comply with the building authority regulations. E&OE



# A *VISIONARY* DEVELOPER



Al Seeb Real Estate Development is the driving force behind The Chedi Private Residences, reimagining urban luxury in the heart of Dubai. Known for delivering transformative projects, Al Seeb combines innovation and meticulous attention to detail to craft living experiences that set new benchmarks in exclusivity and sophistication.



# LEADING PARTNERS

GHM

RESIDENCE MANAGEMENT

A global leader in luxury hospitality, GHM is the visionary force behind The Chedi brand, celebrated for its tranquil retreats and timeless elegance. With an unwavering commitment to unrivalled lifestyle experiences, each GHM property seamlessly blends modern interpretations of Asian design with distinctive local influences, crafting inspired and unforgettable spaces. Expanding its legacy of culturally immersive experiences to Dubai, GHM ensures that every element of The Chedi Private Residences embodies its signature sophistication and refined craftsmanship, offering a refined sanctuary in the heart of the city.

studio  
*bruno guelaff*

ARCHITECT & DESIGN CONSULTANTS

Studio Bruno Guelaff is the visionary design force behind The Chedi Private Residences, seamlessly blending bold modernity with timeless elegance. Their expertise transforms the project’s vision into a refined reality—where luxury, functionality, and aesthetic harmony converge effortlessly. As an award-winning design studio under BG Group, they have meticulously shaped every facet of The Chedi Private Residences, from architecture and interior design to amenities and landscapes. With 17 years of shaping Dubai’s design narrative, Studio Bruno Guelaff has curated a distinct identity for this exceptional project, embodying sophistication and innovation at every level.

DEVMARK

STRATEGIC ADVISORY, SALES & MARKETING

Devmark was founded in 2018 to address a gap in the marketplace for a company that specializes in providing real estate developers with top-notch development marketing and sales services for residential projects.

Freedm

CREATIVE AGENCY

Freedm is a global, award-winning, creative agency. With an international expert team, Freedm represents a diverse collective of creative and strategic specialists who provide real estate developers with marketing and creative strategy, that translates into powerful return on investment.





DEVELOPED BY



EXCLUSIVE SALES & MARKETING BY



CONTACT  
800DEVMARK

DISCLAIMER

Any images and visualizations contained herein are provided for illustrative and marketing purposes only. Any Concept Renderings as shown for the residences are representative only, and the Developer reserves the right to make changes or substitutions of equal or better quality for any features, materials and equipment which are included with the unit. All information contained herein is subject to change without notice and without liability and only the information contained in the final Sales and Purchase Agreement entered into between the Seller and Buyer will have any legal effect. E&OE.